



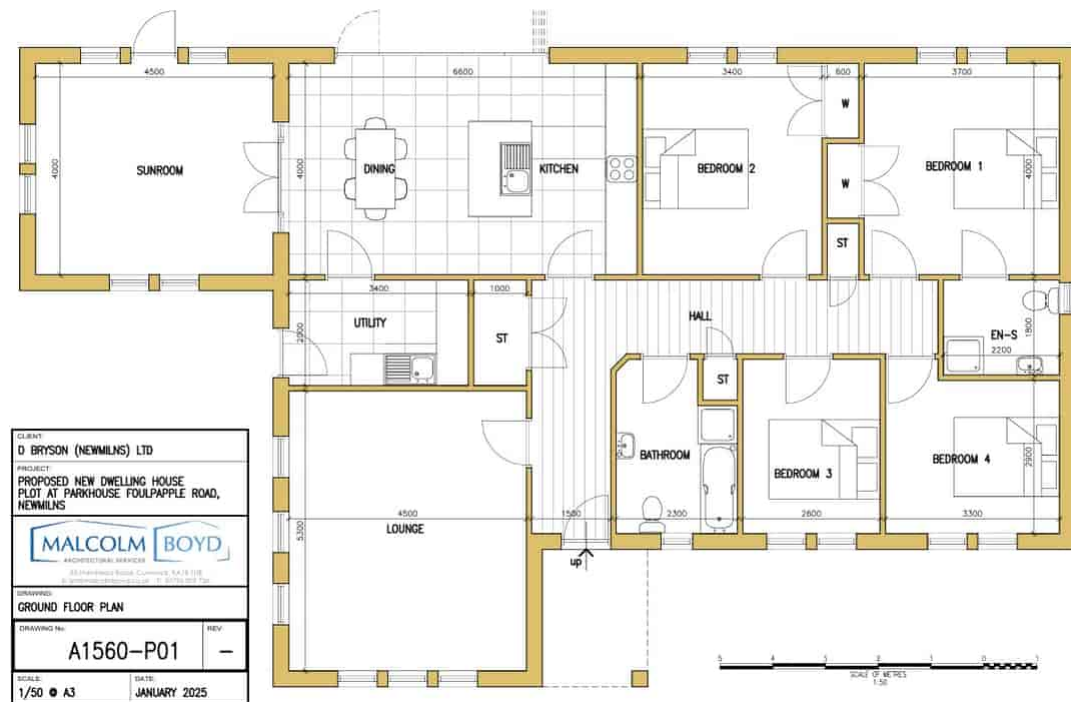
Plot at Parkhouse, Foulpapple Road

Newmilns, KA16 9LB

Offers in Region of £99,995

GREIG

Residential



Plot at Parkhouse, Foulpapple Road

Newmilns, KA16 9LB

Proudly presenting to the market this rare opportunity to secure a sizeable plot of land extending to approx 1370 square meters with full planning consent to build a luxury four bedroom detached bungalow complete with superb sun room. Situated on arguably one of Newmilns' most favoured addresses boasting an elevated position with rolling views of the Ayrshire countryside and Lanfine estate providing a stunning backdrop. Conveniently positioned with ease of access to all local amenities, schooling and transport links, this has the perfect balance for any lifestyle and once developed will make a truly unique bespoke family home.





Additional Information

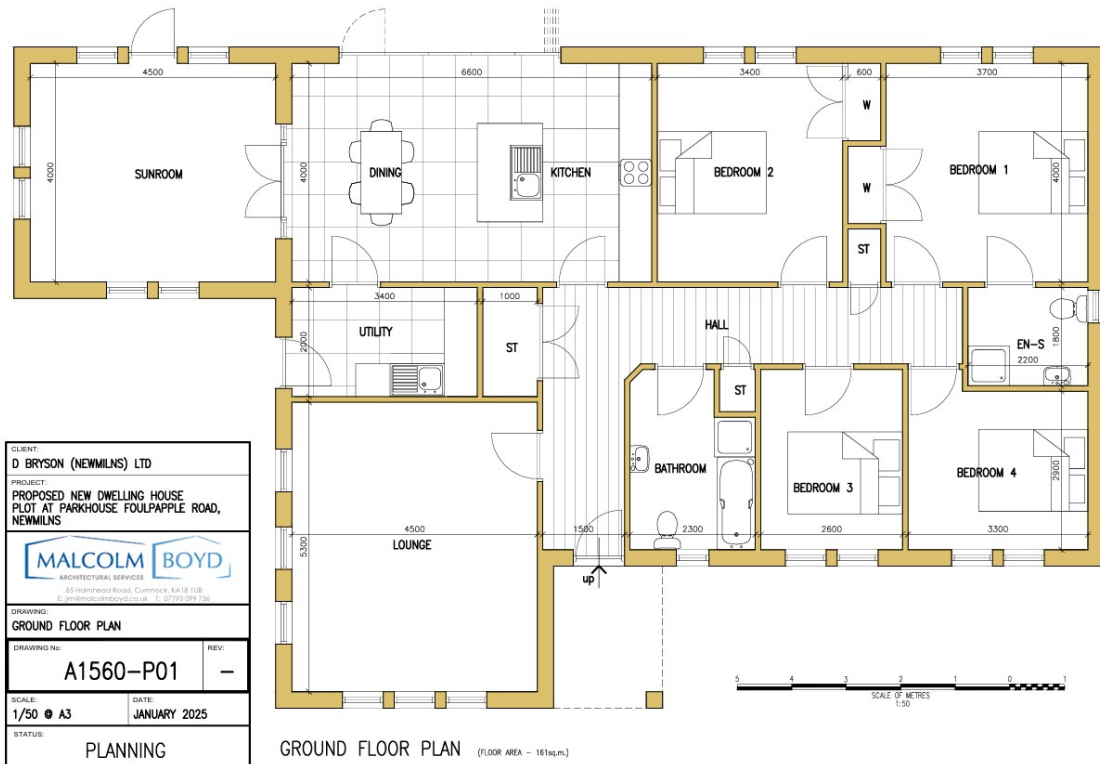
Plot size- 1370 Square meters/ 0.34 acres

Planning reference - 25/0043/PP

Locality

Situated on the periphery of Newmilns, this superb plot offers the perfect semi rural location with an abundance of nature trails and walks all complete with uninterrupted countryside views. The ever popular Lanfine estate provides further countryside walks, with miles of off road pathways passing the River Irvine, historical features, an abundance of wildlife and a large wild boar and deer population to spot on your travels. The town of Newmilns provides ease of access to local amenities, schooling and transport links with a regular bus service running to Kilmarnock. The towns of Galston and Darvel are within a short drive away providing further amenities, a large Tesco store and a variety of small locally run shops and cafés.

GREIG *Residential*



Greig Residential
18 Henrietta Street, East Ayrshire
KA4 8HQ
01563 501350
info@greigresidential.co.uk