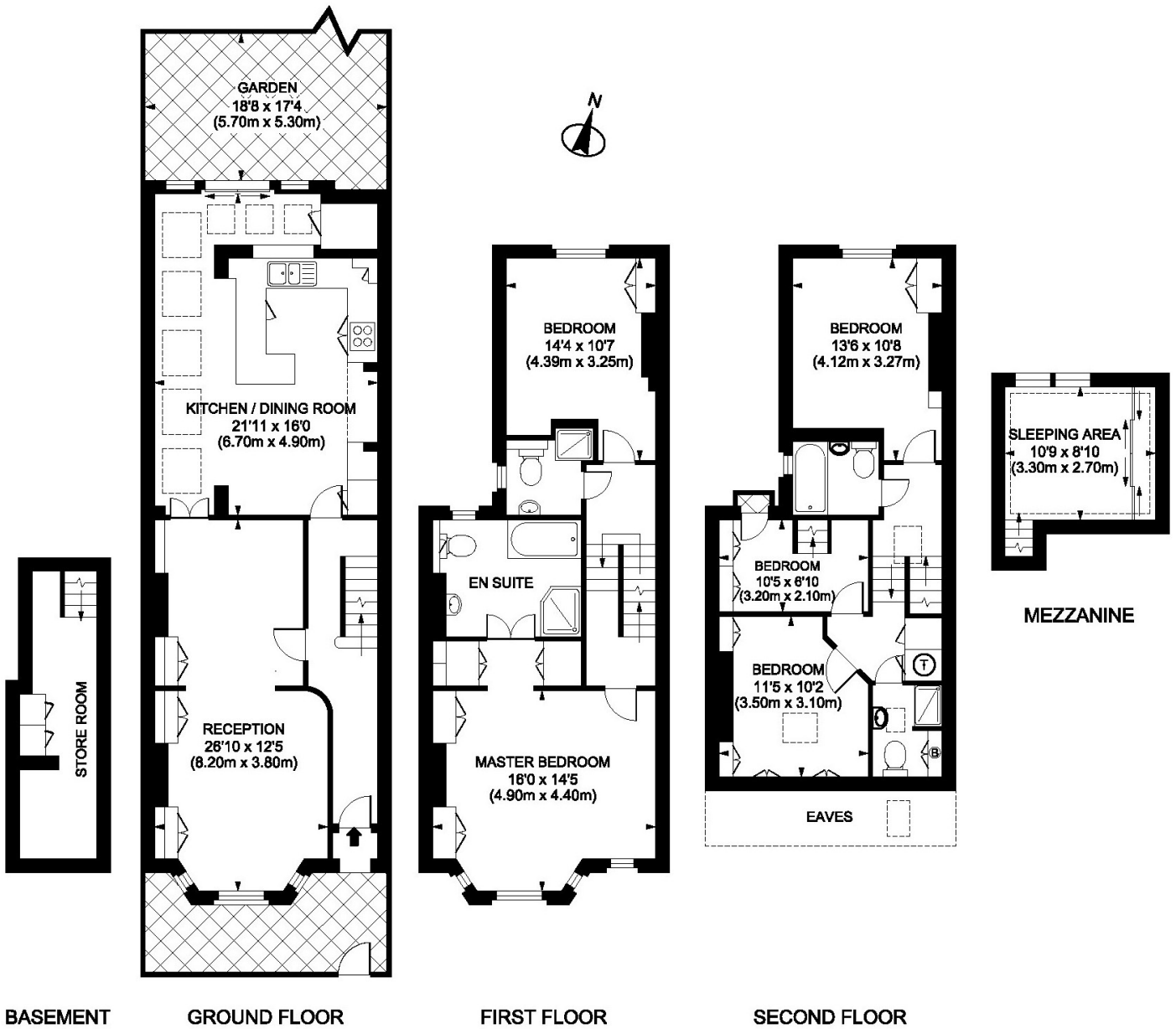




Bramfield Road
Between the Commons
SW11

TO LET

This larger-than-average Victorian 5 bedroom family house is in good condition throughout. With its extra-large double loft conversion and wrap-around kitchen extension, this sizeable home provides 5 bedrooms all with fitted wardrobes and 4 bath/shower rooms (all with under-floor heating, Vola fittings and Duravit sanitary ware). The house is finished to a good standard and has attractive modern decor and carpets.



Bramfield Road, SW11
 Gross internal area 2045 sq ft/190 sq metres
 ©photosandfloorplans.com



PROPERTY FEATURES

- Rear Garden
- Victorian House
- Large Tanked Cellar
- Extended Kitchen / Dining Room
- Nanny Suite with sleeping/sitting area.
- 5 Bedrooms (Total)
- 4 Bath/Shower Rooms
- Double Reception Room
- 2045 Sq Ft / 190 Sq M

VIEWING BY APPOINTMENT ONLY

The particulars do not constitute part of an offer or contract: the particulars including text descriptions, photographs and plans are only for the guidance of prospective purchasers and must not be relied on as statements of fact: nothing in the particulars shall be deemed as a statement that the property is in good condition nor that any services or facilities are in good working order: measurements given are approximate: prior to viewing we recommend that you discuss particular points of interest with a staff member to avoid a wasted journey

