



## Garrison Court

Hitchin | Hertfordshire | SG4 9AA

[www.stonegate-estates.co.uk](http://www.stonegate-estates.co.uk)





# GARRISON COURT

## Property Description

This well-presented apartment enjoys an enviable position just moments from Hitchin's bustling market square, with its wide range of boutique shops, cafés, restaurants and bars.

Offering modern, low-maintenance living combined with excellent transport links, it represents an ideal purchase for first-time buyers, downsizers, or investors alike.

Internally, the property has been newly redecorated throughout, providing a fresh and contemporary finish.

The accommodation comprises: a welcoming entrance hallway with storage space, a modern galley-style kitchen fitted with a range of units and integrated appliances with direct access onto the balcony, a bright and airy living/dining room, two well-proportioned bedrooms and bathroom with a three-piece suite and shower over bath.

The apartment further benefits from a long 177-year lease, ensuring long-term security for the new owner.

Externally, the property enjoys the convenience of its central location, being within easy walking distance of both Hitchin town centre and Hitchin mainline train station, which offers direct services to London King's Cross and Cambridge – making it ideal for commuters.

**£237,500 Leasehold**





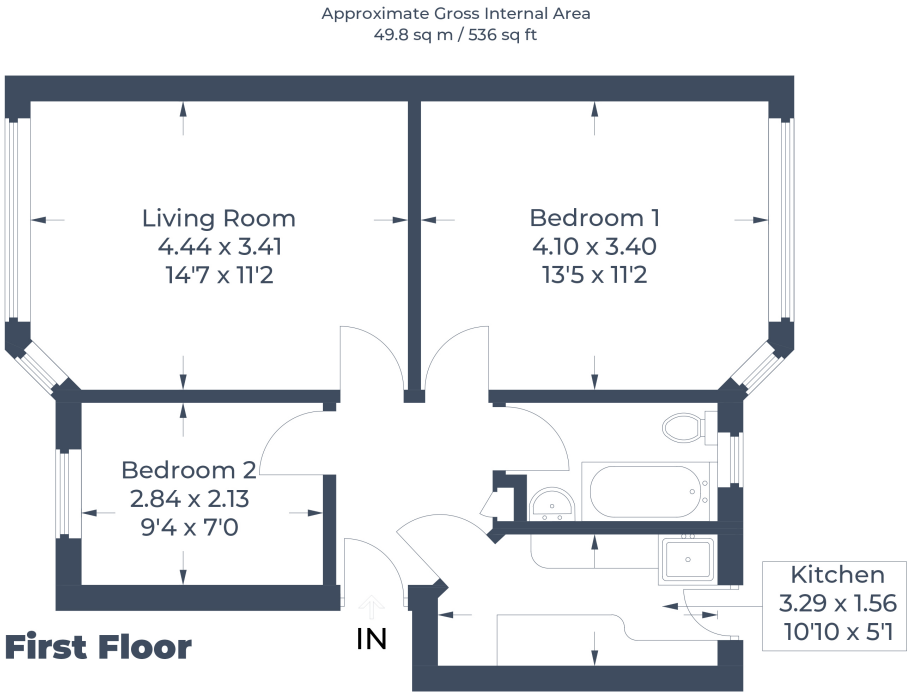


Illustration for identification purposes only,  
measurements are approximate, not to scale.  
© CJ Property Marketing Produced for Stonegate Estates





- Two Bedroom Apartment
- No Chain
- Town Centre Location
- Redecorated Throughout
- Balcony
- Galley Style Kitchen
- Modern Bathroom
- Walking Distance to Station and Town
- Cul De Sac Location

EPC Rating: C

Stonegate Estate Agents

01462 438979

[sales@stonegate-estates.co.uk](mailto:sales@stonegate-estates.co.uk) | [www.stonegate-estates.co.uk](http://www.stonegate-estates.co.uk)

