

6 Bedroom(s), Detached House, Freehold

Bawtry Road, Bessacarr.



- 3D Virtual Tour Available
- Basement with Games Room, Gym, Bar And Wine Cellar
- Spacious Six Bedroom Detached Character Home
- Kitchen Diner and Utility Room/Pantry
- Out Building Ideal For Office Space And Storage
- Open Plan Lounge And Dining Room/Second Reception Room

- Envious Location on Bawtry Road
- Spacious Detached Character Home
- Master Suite With En Suite And Dressing Room
- Two Family Bathrooms
- Garage With Electric Doors

Reduced
£599,950
Reduced

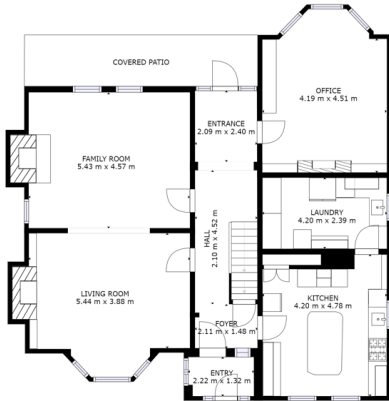
Book your viewing today Tel: 01302 247754

Owner's View

3D Virtual Tour Available- Take a closer, more detailed look around via our 3D Virtual Tour! Don't forget that you can also check availability for viewings online via a visit to our website... This substantial 6 bedroom, 4 bathroom detached family home is located in the desirable location of Bawtry Road, Bessacarr Full of character and original features the home boasts an abundance of living space, a basement with a games room, gym, bar and wine cellar, this home has something for everyone. With a separate office, multiple reception rooms, an open plan kitchen diner, six bedrooms with an en suite and dressing room in the master, you won't be disappointed. Enjoy the convenience of multiple parking spots, and a driveway. Don't miss out on this enviable location – contact us today to book a viewing!

Ground Floor

Floor Plan



GROSS INTERNAL AREA
FLOOR 0: 79 m², FLOOR 1: 129 m²
FLOOR 2: 124 m², FLOOR 3: 94 m²
EXCLUDED AREAS: REDUCED HEADROOM BELOW 1.9m: 0 m²
TOTAL: 418 m²

FLOOR 2



Utility/Pantry



Kitchen Diner



Benefiting from a Range master gas cooker, One piece dgranite dining table, india granite worktop including 2.5ft splash back all round the kitchen including in the pantry.

Open Plan lounge And Sitting Area





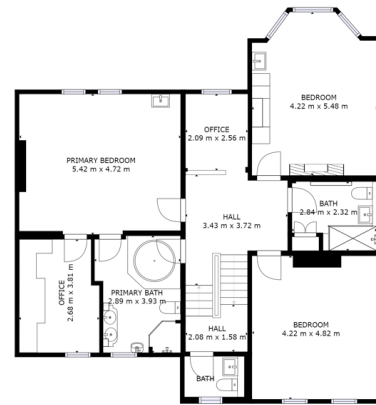
Second Reception



First Floor



Floor Plan



GROSS INTERNAL AREA:
 FLOOR 0: 70 m², FLOOR 1: 129 m²
 FLOOR 2: 124 m², FLOOR 3: 94 m²
 EXCLUDED AREAS: REPOSED WARDROOM BELOW: 1.5m², 0 m²
 TOTAL: 418 m²
SEES AND DIMENSIONS ARE APPROXIMATIONS. ACTUAL AREA VARY.

FLOOR 3



First Floor Toilet



With Italian quality ceramic tiles

Master Bedroom Suite



Moorish design Roca fully tiled Spanish ceramics with double round jacuzzi.

Second Bedroom



Third Bedroom



Bathroom



Fully tiled with English ceramics, pressurised copper tank,

Fifth Bedroom

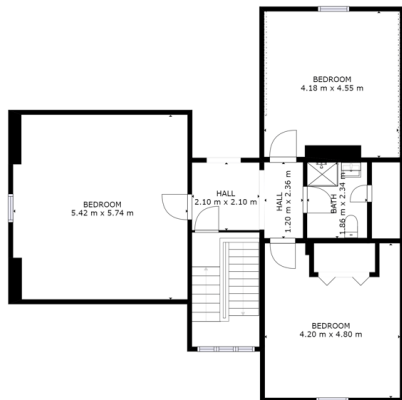


Sixth Bedroom



Second Floor

Floor Plan



GROSS INTERNAL AREA
FLOOR 1: 75 m², FLOOR 2: 124 m²
FLOOR 3: 124 m², FLOOR 4: 74 m²
EXCLUDED AREAS - REDUCED HEADROOM BELOW 1.9M: 0 m²
TOTAL: 497 m²

Matterport

Fourth Bedroom



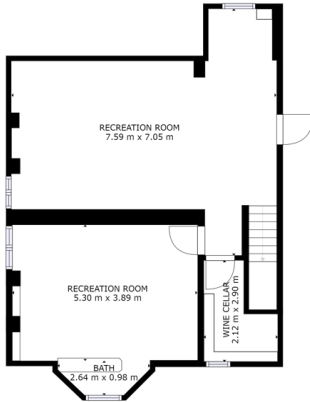
Shower Room



Fully tiles with Spanish ceramic tiles (Porcelonosa)

Basement

Floor Plan



FLOOR 1

GROSS INTERNAL AREA
FLOOR 1: 126 SQ. METERS (1,339 SQ. FT.)
FLOOR 2: 124 SQ. METERS (1,339 SQ. FT.)
EXCLUDED AREAS: REDUCED HEADROOM RECESSES 1.5M², 0.9M²
TOTAL: 418 SQ. METERS



The main two rooms fully tanked with central heating and double glazed windows all round by Boardman Bros. Fitted Bar, small gym and wine cellar.

Games Room



Featuring a Snooker table, felt and cushions recently replaced. The mahogany top borders have been revamped and polished by restorer George Stone.

Bar And Gym



External

Front Aspect



There is a galvanised designed metal gate with metal fencing- Electric gate is powered by a top grade motor with GSM sim card and intercom. The property also features a first floor balcony with metal swing seat.

Rear Garden

Energy Performance Certificate

Energy Efficiency Rating		
	Current	Potential
<i>Very energy efficient - lower running costs</i>		
(92-100) A		
(81-91) B		
(69-80) C		74
(55-68) D		
(39-54) E	46	
(21-38) F		
(1-20) G		
<i>Not energy efficient - higher running costs</i>		
England, Scotland & Wales		EU Directive 2002/91/EC 