



Roundway, CAMBERLEY, Surrey GU15 1NR

Jigsaw Estates are pleased to present to the market this extended, detached family home situated on the popular Copped Hall development within close proximity of some excellent local schools including Tomlinscote & Ravenscote.

As you enter the property you are greeted by a large entrance hall off of which are your three main reception rooms. There is also a door to the large open plan kitchen/dining room with central island/breakfast bar and space for a large dining table. There is also access to the garden from the kitchen and living room. Further benefits on the ground floor consist of a downstairs cloakroom and utility room. Upstairs there are four double bedrooms with the principle bedroom offering an en-suite. There is a further re-fitted family bathroom.

Outside to the rear there is a large secluded garden with patio area with the majority of the garden being mainly laid to lawn. There is side access leading to the front. The front has a block paved driveway offering off street parking. There is an integral garage with power and light which can also be accessed from inside the house.

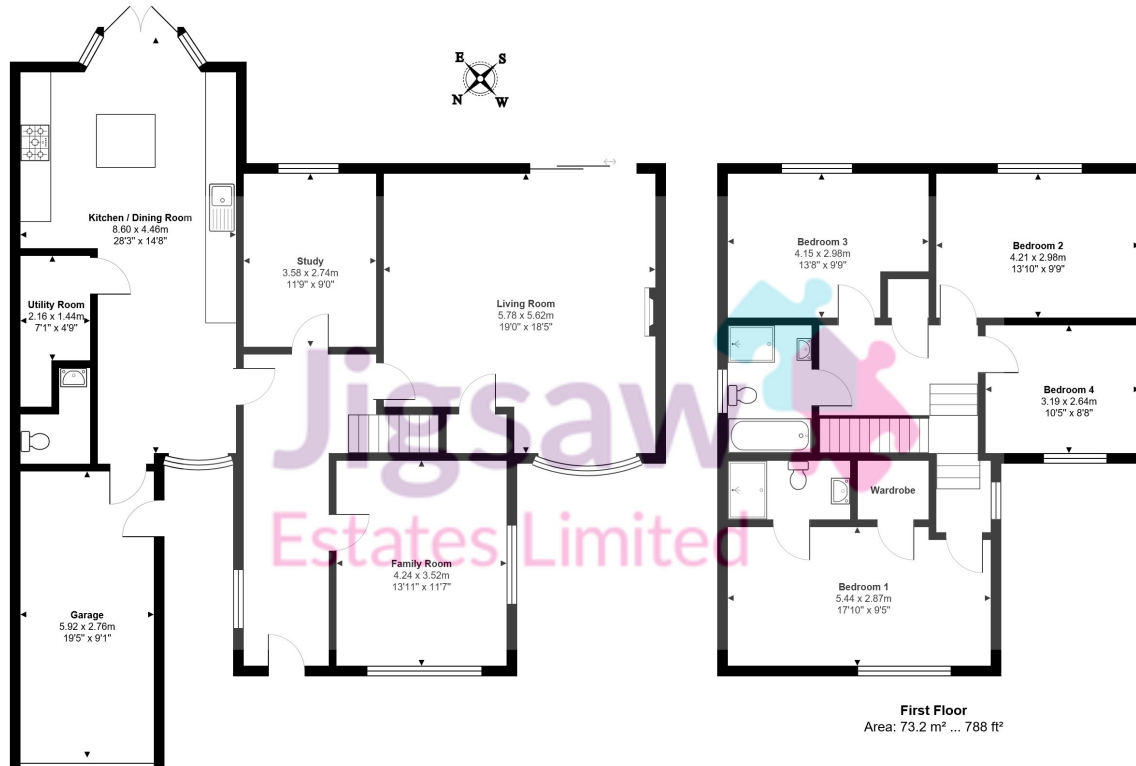
Copped Hall is ideally situated to not only be close to the local schools but also within easy reach of both Junction 3 & 4 of the M3 and only a short drive to Camberley town centre and train station. There are some local shops located on the nearby Heatherside development for all your day to day needs and less than a mile away there is a waitrose supermarket.

Offers in Excess of £675,000 Freehold



- FOUR DOUBLE BEDROOMS
- COPPED HALL
- LARGE OPEN PLAN KITCHEN/DINER
- LARGE REAR GARDEN
- CLOSE TO LOCAL SCHOOLS

- DETACHED FAMILY HOME
- THREE RECEPTION ROOMS
- EN-SUITE & BATHROOM
- GARAGE



Ground Floor
Area: 128.5 m² ... 1383 ft²

Total Area: 201.7 m² ... 2171 ft²

This floor plan is provided for representation purposes only, whilst every attempt has been made to ensure their accuracy the measurements of windows, doors and rooms are approximate and should be used as such by prospective purchasers. No responsibility will be taken for any errors, omission or mis-statement. The services, systems and appliances mentioned have not been tested and cannot verify that they are in working order.

