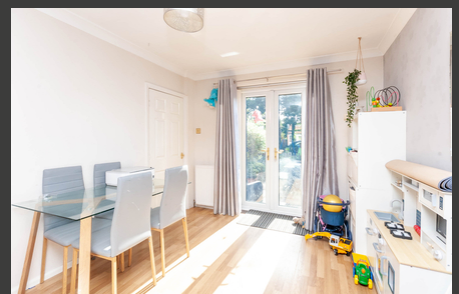
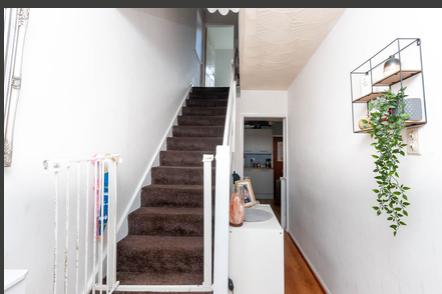


# Elizabeth Drive, Padgate, Warrington, £250,000

Offers in Region Of



Located on this much sought after area just off Green Lane in Padgate, the property is ideal for the regular commuter with Padgate train station within a gentle stroll and access to the motorway networks is close by. There is also excellent schooling close by, falling in the Kings Academy catchment area and a great range of amenities. Sat on a lovely plot with one of the larger gardens on the row. This family home briefly comprises: an entrance hallway with stair access, a bay fronted lounge to the front opening to a dining area to the rear with views of the garden, there is a spacious newly fitted kitchen and a handy utility room. On the first floor there are three spacious bedrooms, landing and family bathroom with walk in shower. Externally there

**See more of this house at [ashtons.net](https://www.ashtons.net)**

