

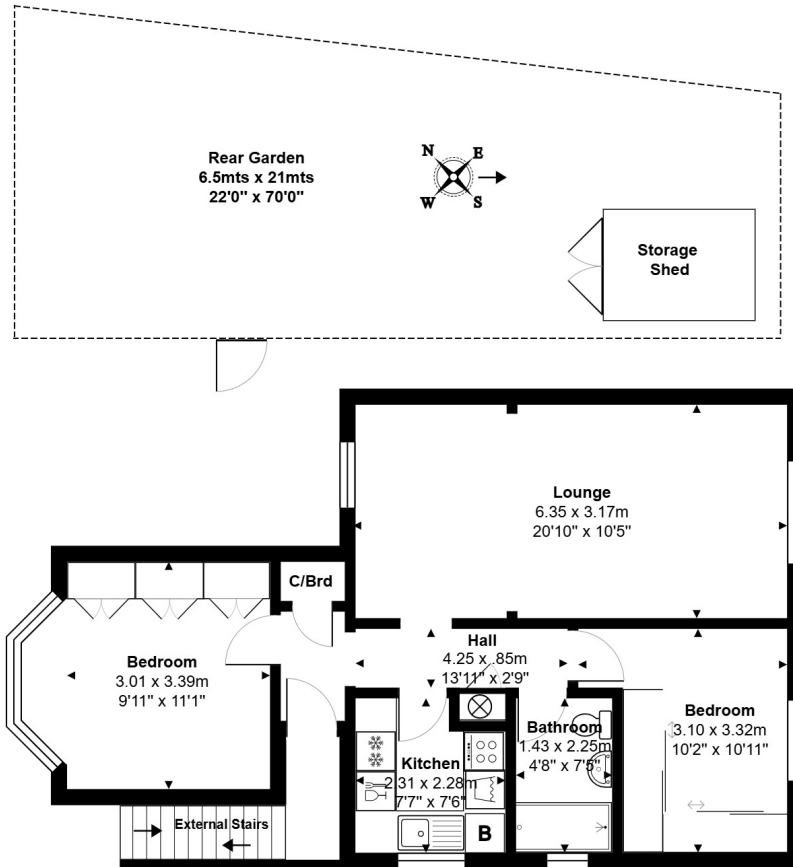


Clare Road, Staines-upon-Thames, Surrey, TW19 7EG

WELL PRESENTED & HUGELY SPACIOUS TWO BEDROOM MAISONETTE SITUATED ALONG THIS MUCH SOUGHT AFTER ROAD CONVENIENTLY POSITIONED FOR EASY ACCESS TO BOTH STAINES & ASHFORD TOWN CENTRES, LOCAL MOTORWAY NETWORKS & HEATHROW AIRPORT. The property benefits from a spacious lounge/diner (with the ability to re-instate as 2 rooms), separate modern fitted kitchen, two large double bedrooms, luxury modern white bathroom suite, extensive landscaped rear garden with light and power and a 900+ year lease. Viewings Highly Recommended!

ROOM DESCRIPTIONS

FLOORPLAN



First Floor

Total Area: 57.0 m² ... 613 ft²

All measurements are approximate and for display purposes only.