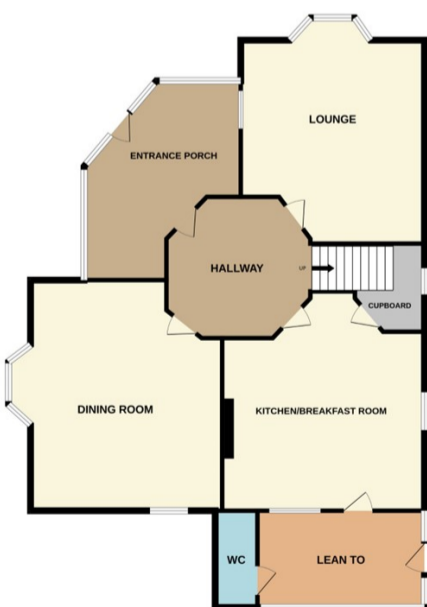




Thurlby, Bourne

£350,000



*****DETACHED CHARACTER PROPERTY***** Offers are invited in excess of £350,000 for this established spacious detached home located in the popular village of Thurlby just South of Bourne. The property is in need of fully refurbishing but has great potential, with a large garden, field views and no onward chain. This home has three bedrooms, family bathroom and a walk in storage cupboard upstairs. Downstairs there are two large reception rooms, kitchen/breakfast, lean to, hallway and entrance porch. Outside there is a established garden to the front, side and rear, driveway parking leading to a single garage. Properties like this do not come up very often so viewings are highly recommended. EPC Energy Rating F/Council tax band D.