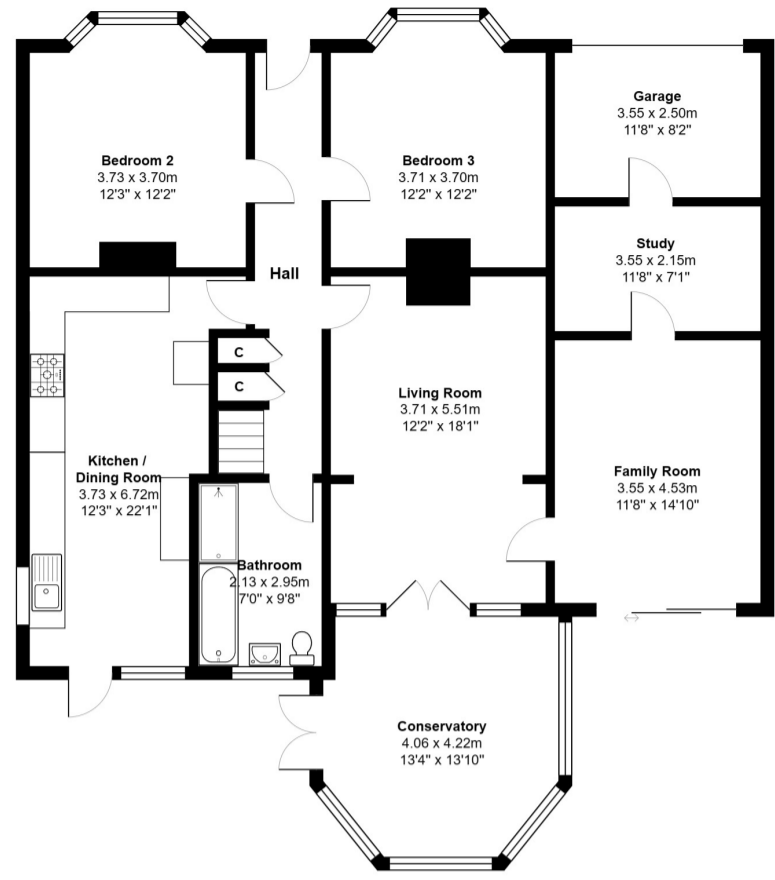
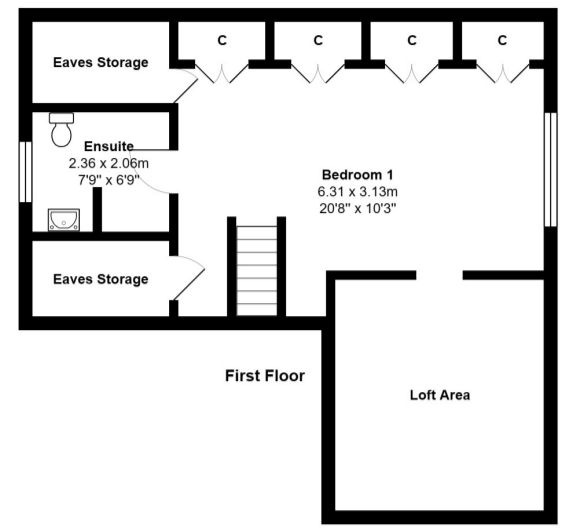


3.71 x 2.05m
12'2" x 6'9"



Ground Floor



First Floor

Total Area: 200.5 m² ... 2158 ft²
All measurements are approximate and for display purposes only



35a, High Street, Hemel Hempstead,
Hertfordshire, HP3 0HG
T: 01442 831500
F: 01442 831300
E: info@whitewoodproperties.co.uk
W: http://www.whitewoodproperties.co.uk



Chesham Road, Bovington

£875,000

A beautifully presented four double bedroom Detached Chalet bungalow situated on a double width plot with a well stocked large rear garden measuring approx 120ft in length and a carriage gated driveway providing off road parking for several cars.

The accommodation comprises of entrance hall, Sitting room, Conservatory Room, Kitchen diner, Family room/Bedroom 4, Study, two double bedrooms on the ground floor, family bathroom, on the first floor there is a large Bedroom with vaulted ceilings, a balcony style Velux window and a well appointed en suite WC and Shower room. The garage has been converted but still retains a storage area with space for appliances.

Ground Floor

Entrance Hall

Stairs leading to first floor, wood flooring, radiator, cupboard housing electric consumer unit, doors leading to

Sitting Room

Oak flooring, decorative chimney breast with decorative surround, TV point, French doors leading to a conservatory room, door leading to family room / Bedroom 4.

Conservatory

French doors leading to the rear garden, tiled flooring, double glazed windows and ceiling.

Family Room/Bedroom 4

French doors leading to the rear garden. Point for wall mounted TV.

Study

Feature roof light, concealed cupboard housing TV booster, door leading to

Utility/ Storage

Electric panel up and over garage doors, a range of base units in cream with wood effect work surfaces and plumbing for washing machine.

Kitchen Diner

A range of wall and base units in gloss white with granite effect work surfaces, tiled splash backs, plumbing for American fridge/freezer, space for range gas cooker, grey wood effect flooring, integrated dishwasher, recessed stainless steel sink, door leading to rear garden.

Bedroom Two

Feature bay window overlooking the front driveway, oak flooring, radiator.

Bedroom Three/reception rm

Currently used as a dining room, with feature bay window wood flooring, decorative metal surround fireplace, radiator,

Bathroom

Frosted window overlooking the rear garden, panel bath, shower cubicle with wall mounted shower mixer, close coupled WC, pedestal wash hand basin, radiator, extractor fan.

First Floor

Bedroom One

A double aspect bedroom with feature balcony style Velux window, eaves cupboards with hanging space and storage cupboard, loft storage cupboards housing Vaillant Gas Combi boiler. Door leading to

Ensuite Shower

Window to side, large built in shower tray wall mounted shower mixer with fixed head shower and flexible shower hose attachment. WC with concealed cistern, centrally heated chrome towel radiator, wash hand basin with vanity unit.

Outside

Rear garden

Mainly laid to lawn with mature trees, hedges and shrub beds. Brick built tool storage cupboards, pedestrian access to the front, timber cabin with light and power.

Front Drive

A carriage driveway with two gateways, parking for 8 vehicles,

www.whitewoodproperties.co.uk



W **W** **WHITEWOOD**
ESTATES
COUNTRY HOMES & VILLAGE PROPERTIES

