



WRIGHTS



30 Cowper Road, Welwyn Garden City, Hertfordshire AL7 3LS

Offers Over £525,000 - Freehold

Property Summary

****CHAIN FREE**** A rare opportunity to purchase a three BEDROOM family home in a quiet tree lined road. An END TERRACE home featuring a gated electric entrance with a LARGE DRIVEWAY with plenty of space and a beautifully LANDSCAPED REAR GARDEN . So much more than meets the eye. The property incorporates an INTEGRATED KITCHEN APPLIANCES. A true garden city delight waiting to be unlocked with so much TO OFFER. Cowper Road is conveniently located being within close proximity of a wide selection of schools and amenities. The A414 serving the A1M and A10 is close by. The mainline station is only 2 miles from the property and parkland walks can be found close by. Viewings are recommended to see this unique home. Energy rating D.

Features

- GATED ENTRANCE
- PAVED DRIVEWAY
- BEAUTIFUL CONDITION
- LANDSCAPED GARDEN
- GYM
- ENCLOSED JACUCZZI
- GOOD POSITION
- MODERN KITCHEN AND BATHROOM
- CHAIN FREE
- FREEHOLD



WELCOME TO COWPER ROAD

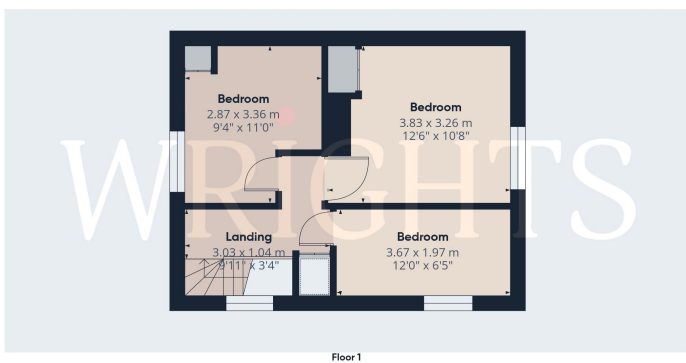
HEAD ON UP

TOUR OF THE GARDEN

ABOUT WELWYN GARDEN CITY

The floor plan shows a rectangular apartment layout. On the right is a large Living Room (3.37 x 5.26 m / 11'0" x 17'3"). To its left is a Kitchen (3.09 x 2.48 m / 10'1" x 8'1") with a sink and stove. Below the Kitchen is a Bathroom (1.39 x 1.71 m / 4'6" x 5'7"). To the left of the Bathroom is a Hallway (2.30 x 1.72 m / 7'6" x 5'7") that leads to a WC (1.39 x 0.78 m / 4'6" x 2'6") and a Bedroom (2.50 x 3.37 m / 8'2" x 11'1"). The main entrance is at the bottom center, leading into the Hallway. The apartment is surrounded by a balcony on the left and a terrace on the right.

Room	Dimensions (m)	Dimensions (ft)
Living Room	3.37 x 5.26 m	11'0" x 17'3"
Kitchen	3.09 x 2.48 m	10'1" x 8'1"
Bedroom	2.50 x 3.37 m	8'2" x 11'1"
Hallway	2.30 x 1.72 m	7'6" x 5'7"
Bathroom	1.39 x 1.71 m	4'6" x 5'7"
WC	1.39 x 0.78 m	4'6" x 2'6"



WRIGHTS

Approximate total area^(a)
65.3 m²
705 ft²

Reduced headroom
0.2 m²
2 ft²

(1) Excluding balconies and terraces

Reduced headroom

Calculations reference the RICS IPMS 3C standard. Measurements are approximate and not to scale. This floor plan is intended for illustration only.

GIRAFFE360

