

# Summerhouse Orchard

Glastonbury, BA6 8JA

COOPER  
AND  
TANNER



£225,000 Freehold

🛏 2 🛋 1 🚿 1 EPC D

## Description

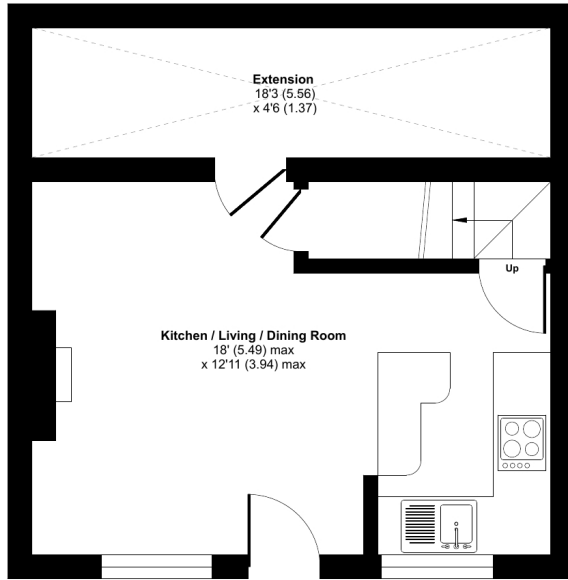
This charming cottage is situated in an incredibly sought after, secluded location and is just a few minutes walk from the Town Centre. The property is accessed via a gated pedestrian entrance and enjoys a south facing courtyard overlooking Glastonbury Methodist Church. The open plan kitchen/living room has a southerly aspect and features two sash windows. There is also a flame effect fire in the centre of this room. Two bedrooms and the bathroom are located on the first floor. The larger bedroom has built in cupboard space. The low maintenance courtyard is situated at the front of the cottage and overlooks the Methodist Church.



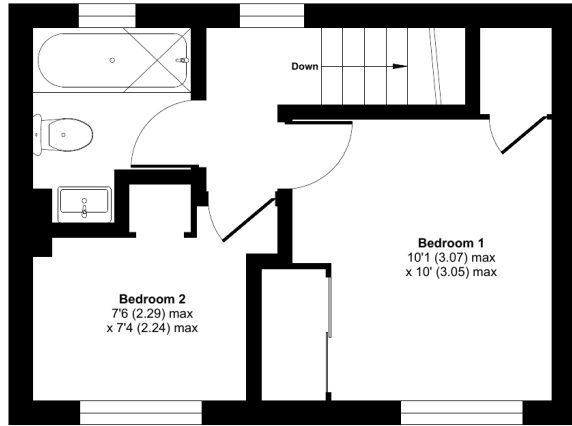
## Summerhouse Orchard, Glastonbury, BA6

Approximate Area = 562 sq ft / 52.2 sq m

For identification only - Not to scale



GROUND FLOOR



FIRST FLOOR



Floor plan produced in accordance with RICS Property Measurement Standards incorporating International Property Measurement Standards (IPMS2 Residential). © richcom 2023. Produced for Cooper and Tanner. REF: 1027229



### Features

- NO ONWARD CHAIN
- Rarely available, centrally located cottage
- Gated access
- Original SASH WINDOWS
- Tranquil location, away from busy roads
- Residents communal green (Church owned)
- Full of character and charm
- Freehold - Council Tax Band B



### Local Information

- Council Tax Band B
- Tenure Freehold
- EPC Rating D

#### GLASTONBURY OFFICE

Telephone 01458 831077

41, High Street, Glastonbury, Somerset BA6 9DS

[glastonbury@cooperandtanner.co.uk](mailto:glastonbury@cooperandtanner.co.uk)

COOPER  
AND  
TANNER

Important Notice: These particulars are set out as a general outline only for the guidance of intended purchasers and do not constitute, nor constitute part of, an offer or contract. All descriptions, dimensions, reference to condition and necessary permissions for use and occupation, warranties and other details are given without responsibility and any intending purchasers should not rely on the m as statements or representations of fact but must satisfy themselves by inspection or otherwise as to the correctness of each of them.

