



12 Langley Road Surrey, STAINES-UPON-THAMES, TW18 2EH

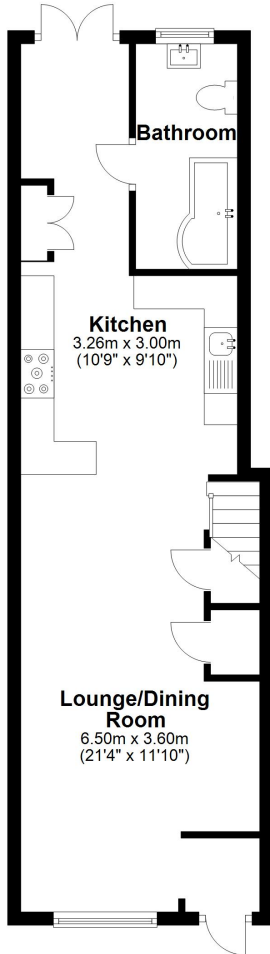
STUNNING TWO BEDROOM CHARACTER COTTAGE IDEALLY LOCATED WITHIN MOMENTS OF TOWN CENTRE & MAINLINE TRAIN STATION. The property benefits from a spacious lounge/diner open to luxury fitted kitchen, two double bedrooms, modern white bathroom suite and secluded rear garden. Unfurnished. Available 15th April. Viewings Highly Recommended!

ROOM DESCRIPTIONS

FLOORPLAN

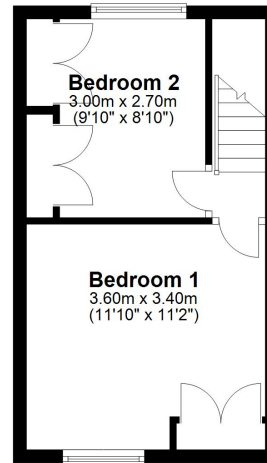
Ground Floor

Approx. 44.9 sq. metres (483.8 sq. feet)



First Floor

Approx. 23.4 sq. metres (251.9 sq. feet)



Total area: approx. 68.3 sq. metres (735.6 sq. feet)