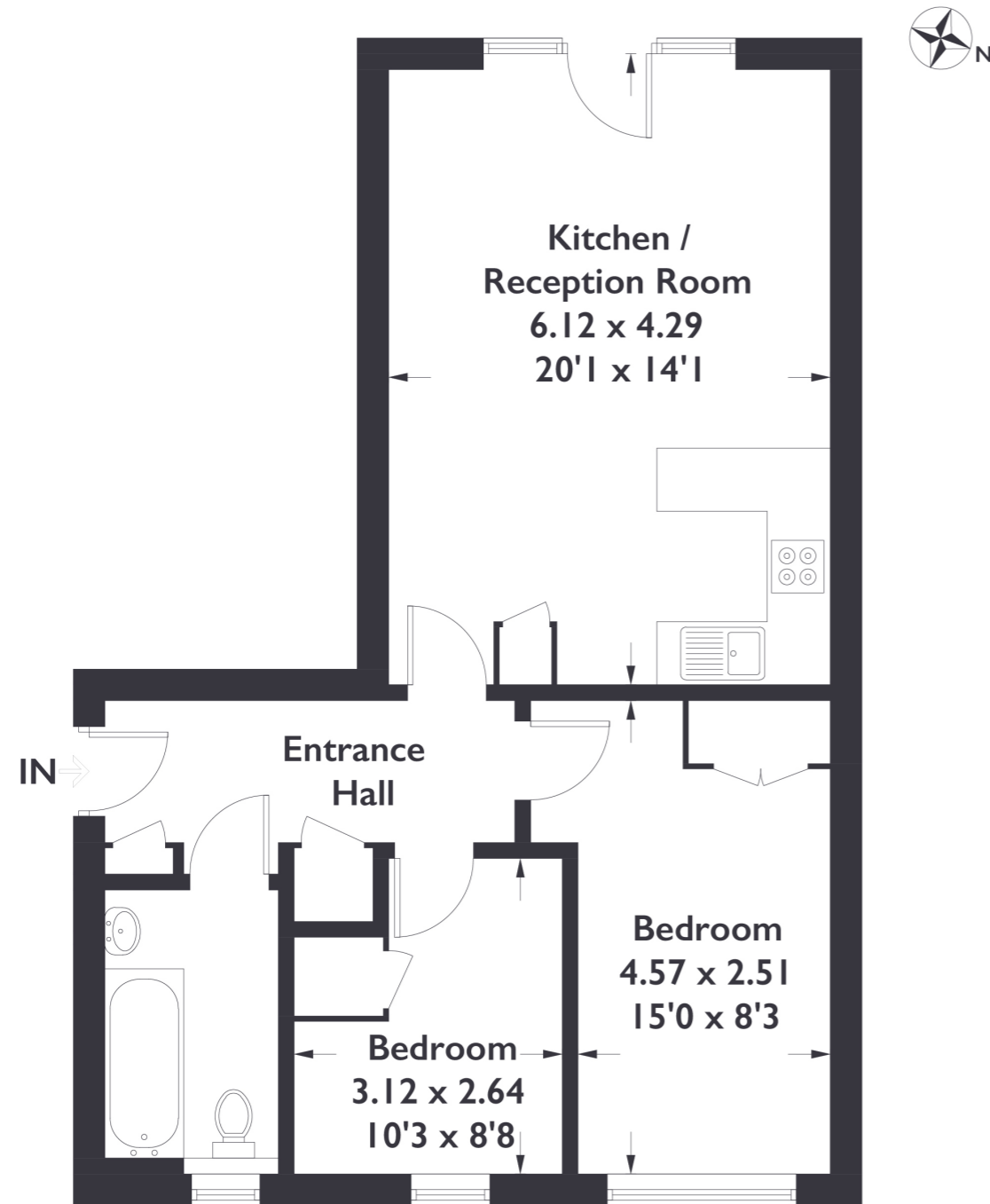


Northfield Avenue, W13

Approximate Gross Internal Area = 58.5 sq m / 630 sq ft



Second Floor

Measured in accordance with RICS Code of Measuring Practice. To be used for identification and guidance purposes only. Whilst every care is taken in the preparation of this plan, please check all dimensions, shapes and compass bearings before making any decisions reliant upon them.



2 BEDROOM FLAT

Lido House, Northfield Avenue, W13

£400,000

This two bedroom apartment is set within a well maintained modern block, nestled in an enviable location between Ealing Broadway, West Ealing and Northfields. With Walpole park within walking distance and Deans Gardens opposite, this flat is really in the heart of Ealing.

FEATURES

- Long Lease
- Open Plan Kitchen Living
- Eat in Kitchen/ Diner
- Close to West Ealing Elizabeth Line
- Park Views
- Lift Access
- Communal Gardens
- Bike Storage

Energy Rating: B



2 BEDROOM FLAT

Northfield Avenue, W13

£400,000

Entering through the well maintained communal hallway and heading up to the second floor, you enter into this well proportioned two bedroom flat.

The hallway acts as the central hub, effortlessly connecting all the rooms, ensuring convenience and easy access. First to the left is the family bathroom. Next door is the second bedroom with a built in wardrobe. Continuing through is the bright master bedroom. There's plenty of space for a double bed and additional furniture as well as large windows looking out onto the well maintained communal terrace which is a true suntrap. At the end of the hallway is the open-plan kitchen living room. The stand out feature, aside from the size of this room, is the large Juliet balcony over looking the parks and the bustling streets of Ealing. The kitchen is arranged in a horseshoe shape with plenty of cupboards. There's space for a dining table as well as a generous sized sofa, making this space perfect for lounging or entertaining.

