

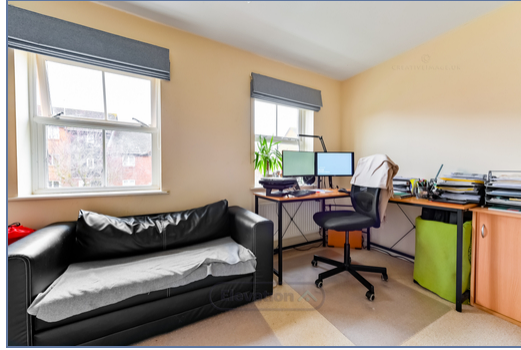


**17 Queensbury Lane, Monkston Park,
Milton Keynes, Buckinghamshire, MK10
9PQ**

£360,000 Freehold

- Council tax band C
- Energy rating C
- No upward chain
- Garage
- En-suite shower room
- Three double bedroom
- Popular area east side of Milton Keynes
- EPC Rating





A stunning three bedroom mid terrace town house, situated within the sought after Monkston Park area (short walk to River Ouzel). Accommodation comprises; entrance hall, downstairs cloakroom, lounge/dining room, fitted kitchen, en-suite shower room, three double bedrooms and a bathroom. Outside there is a garage with parking and an enclosed rear garden. Energy Rating C. Council tax band C.

Monkston Park is situated to the east of Milton Keynes, adjacent to the Ouzel Valley Park. The River ouzel provides picturesque walks to Willen Lake and Caldecotte Lake, via a variety of medieval ponds and the community orchard at Woughton on the Green. The location boast a selection of shops including a Waitrose, petshop and coffee shop in neighbouring Oakgrove, whilst Monkston Park itself has a Coop, barbers and a fish & chip. The local schools are Monkston Primary school and Oakgrove Secondary school are both currently rated as 'good' by Ofsted.

Disclaimer

Whilst we have endeavoured to prepare our sales particulars accurately none of the services, appliances or equipment have been tested. A buyer should satisfy themselves on such matters prior to purchase. Any measurements or distances mentioned in these particulars are for guide reference only. If such particulars are fundamental to a purchase, buyers should rely on their own enquiries. All enquiries should be directed to Elevation Estate Agents in the first instance.