



9 Whittle Court,
Knowlhill, Milton Keynes, MK5 8FT

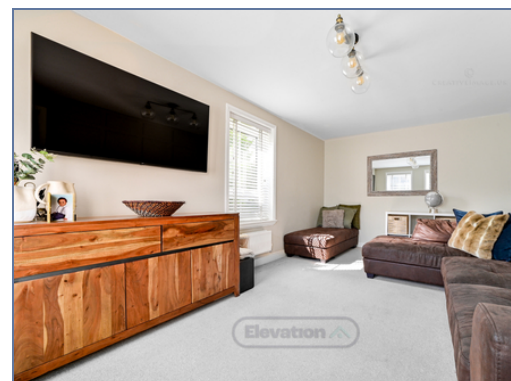
Tel: 01908 231 551
mail@elevationstateagents.com



**2 Trevelyan Way, Old Wolverton, Milton
Keynes, Buckinghamshire, MK12 5FU**

£385,000 Freehold

- EPC-B
- Desirable location of Old Wolverton
- Walking distance to Wolverton Rail Station
- Decorated to a high standard
- Off road Parking
- Three bedroom
- En Suite To Master
- Downstairs cloakroom
- EPC Rating



See our full selection of properties online at www.elevationstateagents.com



Elevation estate agents are proud to present this beautiful three bedroom double fronted family home. This semi detached house is located in the highly sought after area of Old Wolverton, which is located within walking distance of Wolverton train station. The accommodation comprises an entrance hall, kitchen, dining room with large bay window, lounge, downstairs cloakroom, two doubles and one single bedroom, en-suite to the master bedroom, family bathroom, driveway providing off-road parking and a lovely rear garden. Please call the elevation team early to secure your viewing today.

Disclaimer

Whilst we have endeavoured to prepare our sales particulars accurately none of the services, appliances or equipment have been tested. A buyer should satisfy themselves on such matters prior to purchase. Any measurements or distances mentioned in these particulars are for guide reference only. If such particulars are fundamental to a purchase, buyers should rely on their own enquiries. All enquiries should be directed to Elevation Estate Agents in the first instance.

