

**SOLD  
STC**



**92 Hodder Drive, Perivale, Greenford, Greater London UB6 8LL**

**£579,950 - Freehold**

86, Bilton Road, Perivale, Greenford, UB6 7BN 020 8998 4000 [sales@petergamble.com](mailto:sales@petergamble.com)

## PROPERTY SUMMARY

Peter Gamble & Co. offer to the market this well presented EXTENDED 3 bedroom, home.

Situated on this quiet tree lined street in the heart of Perivales' Medway Village the property is well served by local outstanding primary schools, an abundance of local shops and the E5 and 297 bus routes just at the end of the road with Perivale tube station only 6 minutes walk from the property.

There are several local parks and open spaces nearby, including easy access into Ealing and the A40.

To the ground floor, the property, comprises separate dual aspect thru-lounge and a separate rear kitchen extension which accommodates the high-quality kitchen, utility and dining area.

To the first floor are two double bedrooms and single bedroom, family bathroom.

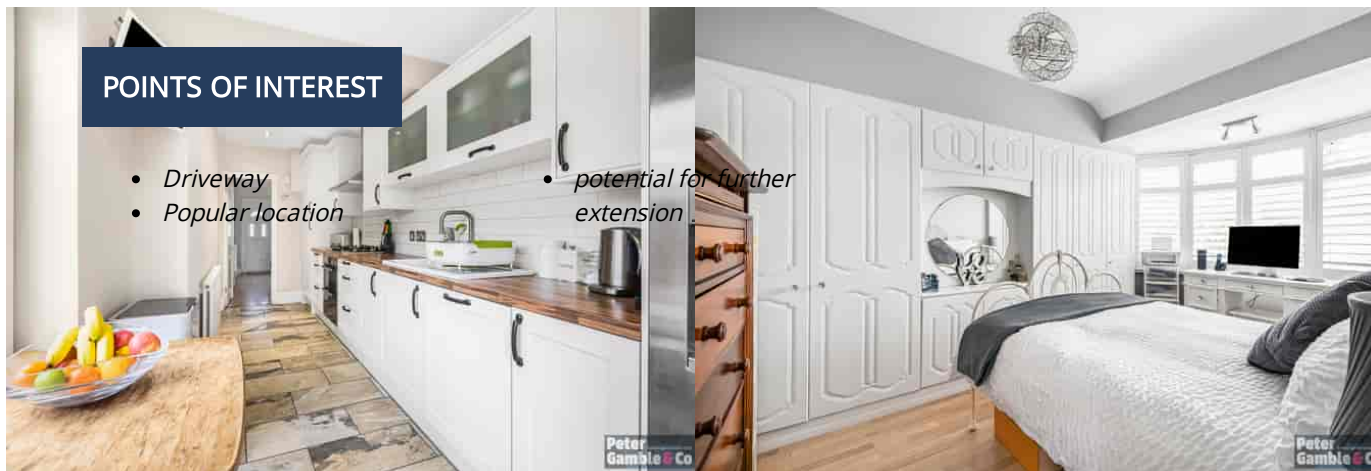
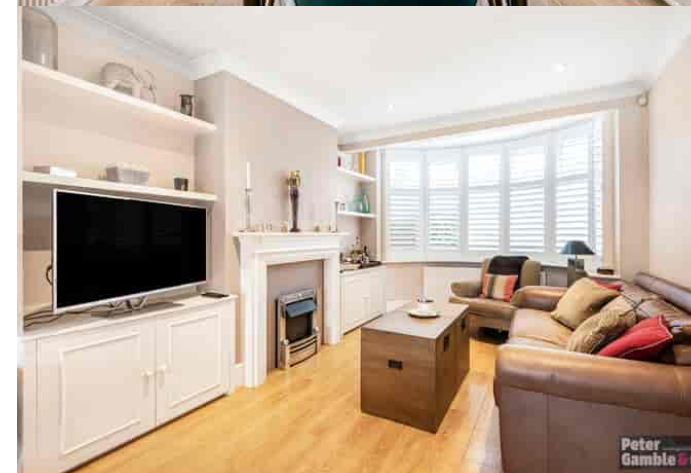
This property is very well presented throughout and provides a lovely living space.

Fully double glazed

Gas central heating

Paved driveway

Viewings highly recommended.

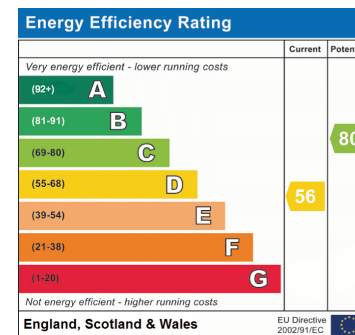


## POINTS OF INTEREST

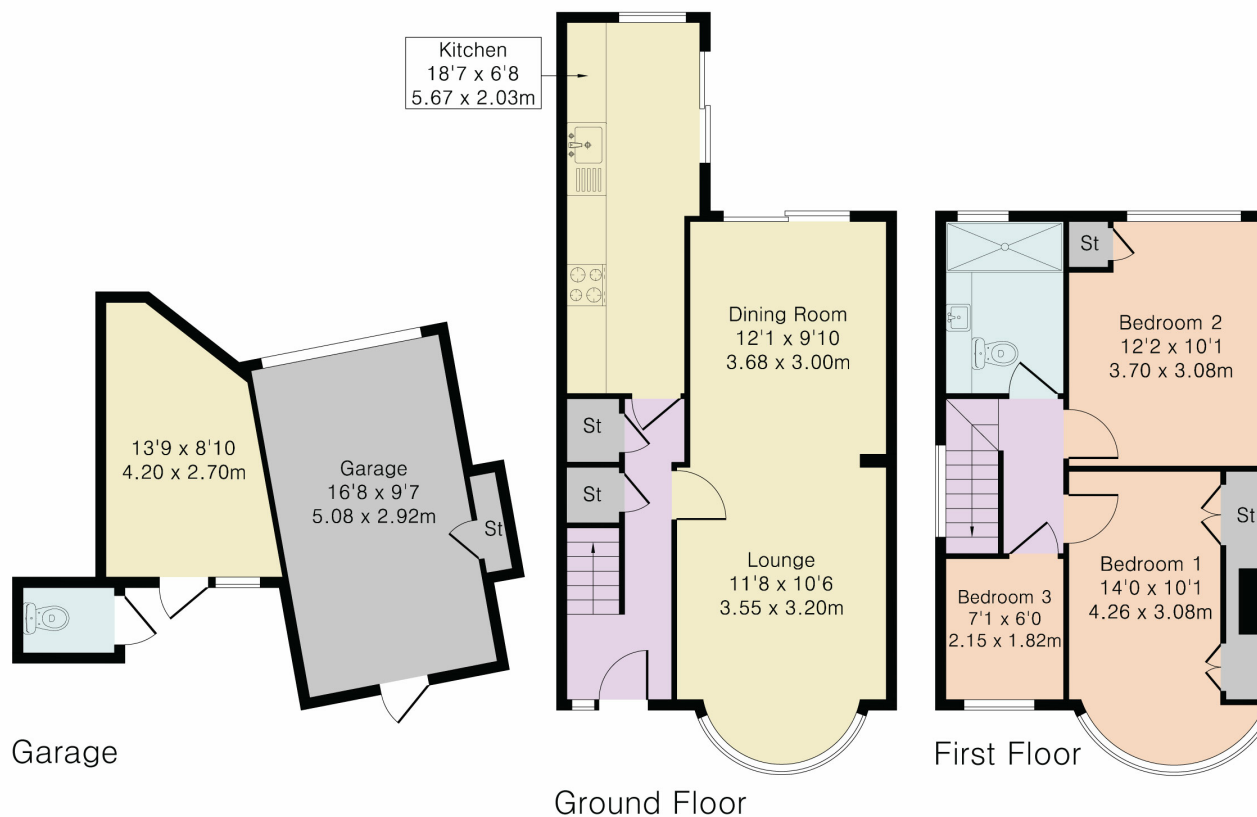
- Driveway
- Popular location
- potential for further extension



## ROOM DESCRIPTIONS



Approximate Gross Internal Area 1157 sq ft – 108 sq m  
 Ground Floor Area 470 sq ft – 44 sq m  
 First Floor Area 406 sq ft – 38 sq m  
 Garage Area 281 sq ft – 26 sq m



Although Pink Plan Ltd ensures the highest level of accuracy, measurements of doors, windows and rooms are approximate and no responsibility is taken for error, omission or misstatement. These plans are for representation purposes only as defined by RICS code of measuring practise. No guarantee is given on total square footage of the property within this plan. The figure icon is for initial guidance only and should not be relied on as a basis of valuation.