

13 Minter Close

DENSOLE, Folkestone
CT18 7DX

£365,000 FREEHOLD

FOR SALE WITH BURNAP + ABEL... Welcome to this charming 3 bedroom detached house tucked away in the peaceful cul-de-sac of Minter Close, Densole. This hidden gem is bursting with potential and awaits your personal touch to bring it back to its full glory. Upon entering, you are greeted by a spacious lounge perfect for unwinding after a long day. The kitchen, dining room, and conservatory offer ample space for entertaining guests or enjoying family meals together. A utility room adds convenience to daily chores. Upstairs, you will find three bedrooms including a master bedroom with an en-suite bathroom for added privacy. A separate family bathroom services the remaining bedrooms. Outside, a garage provides parking or additional storage space while the private garden offers an oasis of peace and tranquillity. Don't miss this opportunity to transform this property into your dream home. Contact us today to schedule a viewing of this promising property on Minter Close, Densole before it's too late!



Porch

Entrance Hall

Lounge

20' 10" x 14' 11" (6.35m x 4.55m)

Kitchen

12' 8" x 10' 10" (3.86m x 3.30m)

Dining Room

12' 8" x 7' 10" (3.86m x 2.39m)

Conservatory

9' 5" x 7' 6" (2.87m x 2.29m)

Utility Room

First Floor Landing

Bedroom One

13' 0" x 11' 11" (3.96m x 3.63m)

En-Suite

Bedroom Two

12' 5" x 9' 6" (3.78m x 2.90m)

Bedroom Three

9' 7" x 9' 6" (2.92m x 2.90m)

Bathroom

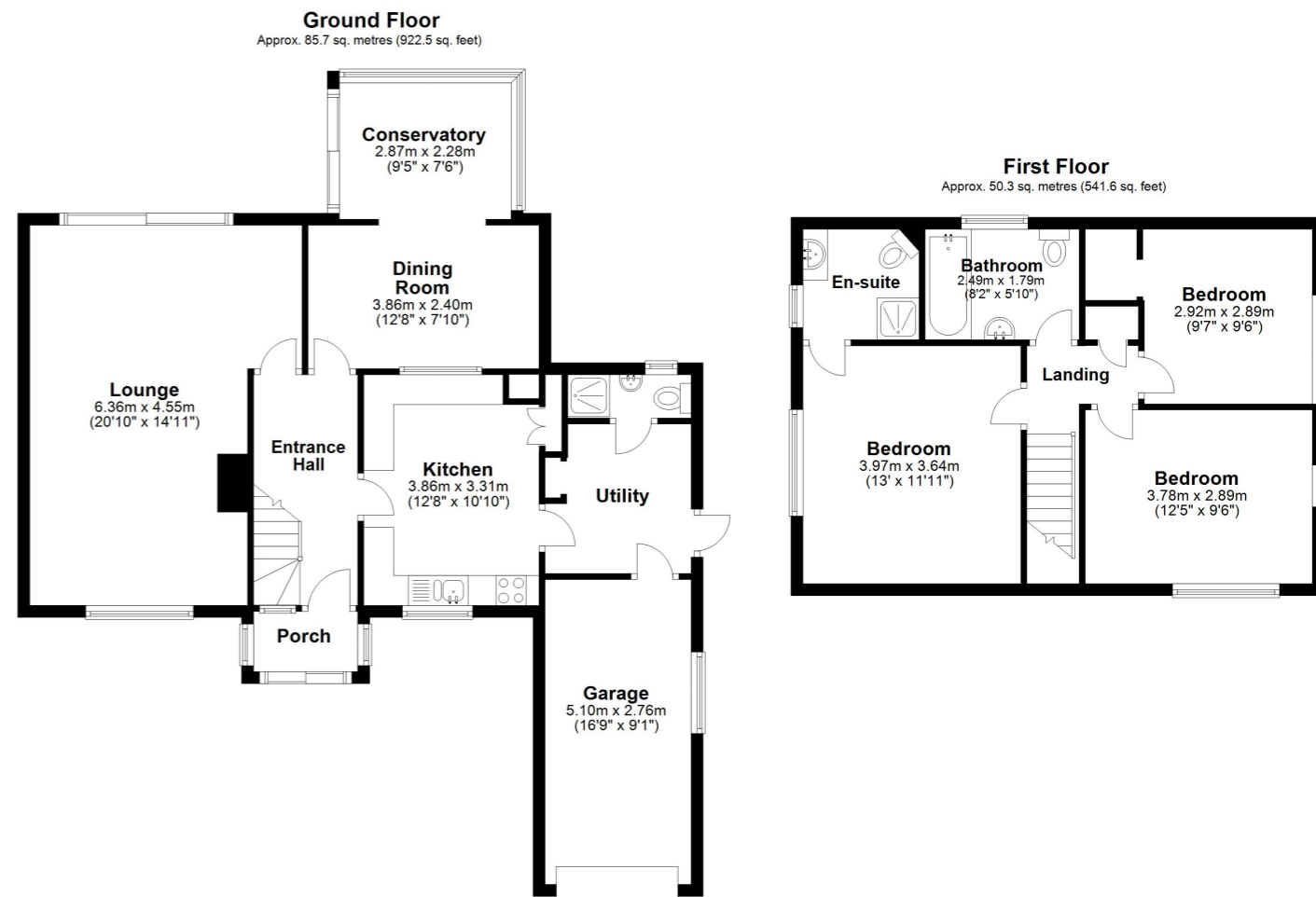
8' 2" x 5' 10" (2.49m x 1.78m)

Garage

16' 9" x 9' 1" (5.11m x 2.77m)

Off Road Parking

Rear Garden



Whilst every attempt has been made to ensure the accuracy of the floor plan contained here, measurements of doors, windows, rooms and any other items are approximate and no responsibility is taken for any error, omission or mis-statement. This plan is for illustrative purposes only and should be used as such by any prospective purchaser. Plan produced using PlanUp.

