

FOR SALE

£300,000

Gilbert White Close, Perivale, Greenford, Greater London. UB6



Peter Gamble & Co. offer to the market this well presented first floor 1 BEDROOM GROUND FLOOR APARTMENT WITH PATIO!

This gorgeous apartment is light and airy with a fully equipped and fitted kitchen, good size lounge, double bedroom with fitted wardrobes and a contemporary bathroom suite. This property further benefits from gas central heating, double glazing, communal grounds an allocated parking space and a private & secluded patio.

Located at the foot of Horsenden Hill within very short walking distance of Perivale Central Line station and the A40.



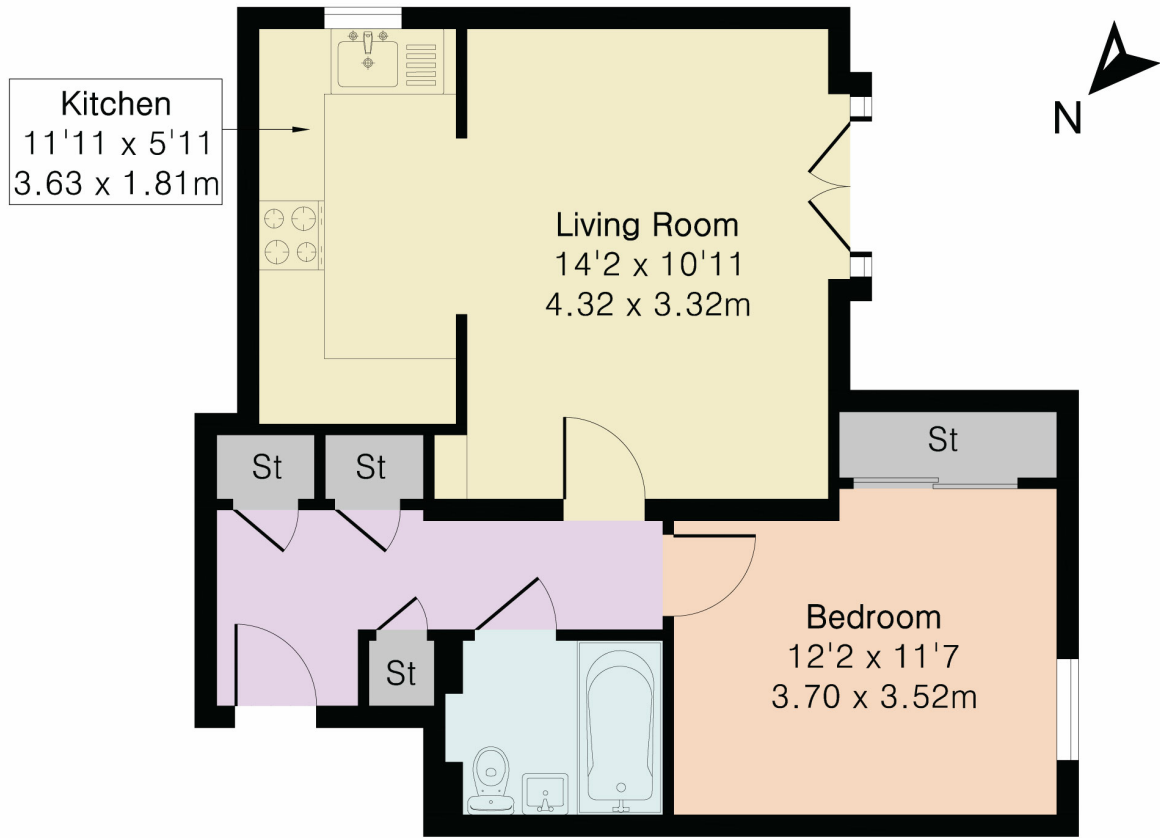








**Approximate Gross Internal Area 486 sq ft - 45 sq m**



**Ground Floor**



Floor plan produced in accordance with RICS Property Measurement 2nd Edition. Although Pink Plan Ltd ensures the highest level of accuracy, measurements of doors, windows and rooms are approximate and no responsibility is taken for error, omission or misstatement. These plans are for representation purposes only and no guarantee is given on the total square footage of the property within this plan. The figure icon is for initial guidance only and should not be relied on as a basis of valuation.



Energy Efficiency Rating		
	Current	Potential
Very energy efficient - lower running costs		
(92+) <b>A</b>		
(81-91) <b>B</b>		
(69-80) <b>C</b>	81	81
(55-68) <b>D</b>		
(39-54) <b>E</b>		
(21-38) <b>F</b>		
(1-20) <b>G</b>		
Not energy efficient - higher running costs		
England, Scotland & Wales		
EU Directive 2002/91/EC		