

Peter Lane & Partners, for themselves as agents for the Vendors or Lessors of this property give notice that these particulars are produced in good faith and are to act purely as a guide to the property and do not have the authority to make or give any warranty, guarantee or representation whatsoever in relation to this property.

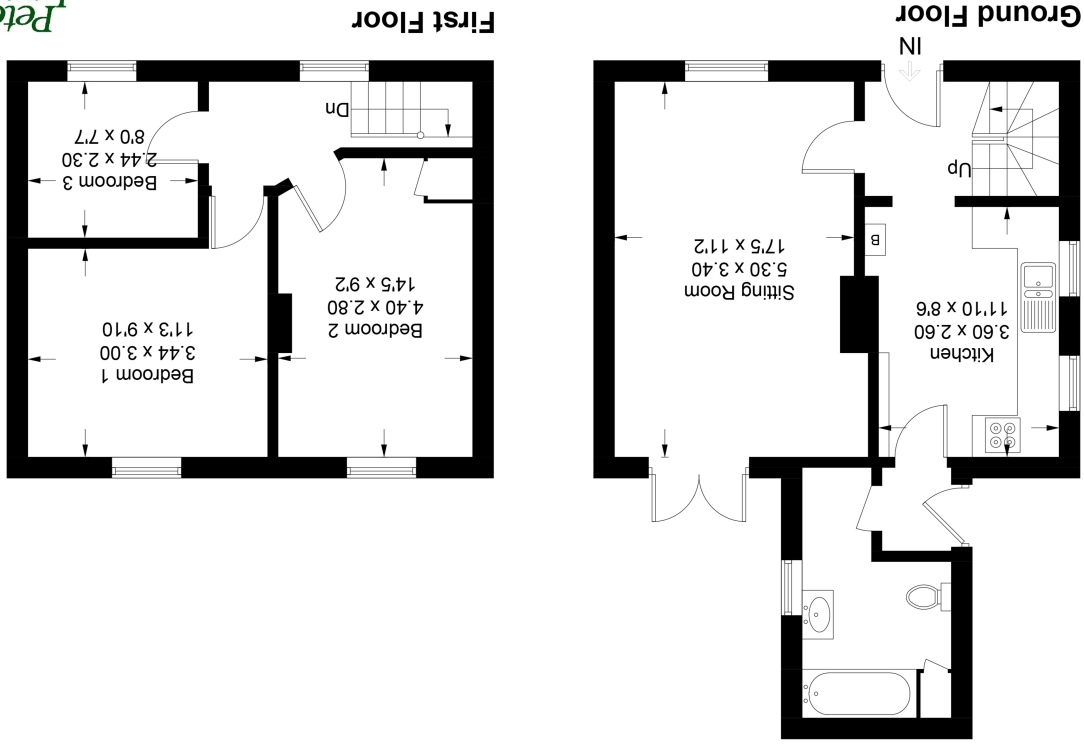


Huntingdon St Neots 32 Market Square 24 High Street Kimbolton
 Huntingdon St Neots 32 Market Square 24 High Street Kimbolton
 Huntingdon St Neots 32 Market Square 24 High Street Kimbolton
 Huntingdon St Neots 32 Market Square 24 High Street Kimbolton

Kimbolton Office: 01480 860400
 www.peterlane.co.uk Web office open all day every day



This plan is for layout guidance only. Not drawn to scale unless stated. Windows and door openings are approximate. Whilst every care is taken in the preparation of this plan, please check all dimensions and compass bearings before making any decisions reliant upon them. (ID906201)
 Housepix Ltd



Montagu Gardens Kimbolton Huntingdon PE28 0JL
 Approximate Gross Internal Area = 77.7 sq m / 836 sq ft



13 Montagu Gardens • Kimbolton • Huntingdon • Cambridgeshire • PE28 0JL

13 MONTAGU GARDENS ●
KIMBOLTON ● HUNTINGDON ●
CAMBRIDGESHIRE ● PE28 0JL

GUIDE PRICE £325,000

- CHAIN FREE
- Established Semi Detached Family Home
- Convenient for Local Schools and Amenities
- Three Bedrooms
- Sitting Room, Kitchen/Breakfast Room
- Garden Backing onto Open Fields
- Off Road Parking



CHAIN FREE - and ideally positioned for access to Kimbolton's High Street with its excellent facilities and schools, this neat, established semi-detached house offers comfortable accommodation with full double glazing and radiator central heating.

In brief, the well-planned accommodation comprises sitting room with open fireplace and French doors opening onto the garden, well-fitted kitchen/breakfast room, ground floor bathroom and three comfortable bedrooms.

The rear garden is of a good size and backs onto open fields. There is ample off-road parking.

