

FOR
SALE



Tealing Drive, Ewell, Surrey KT19 0JS

£700,000 - Freehold



252, Chessington Road, Ewell, Epsom, KT19 9XF 0208 394 2555 sales@jacksonnoon.com

PROPERTY SUMMARY

JACKSON NOON ESTATE AGENTS are proud to present this exquisite TWO BEDROOM DETACHED BUNGALOW renovated to the highest standard, this property stands out as one of our finest listings.

Upon entering, you'll be captivated by the spacious hallway with elegant Amtico flooring, featuring an inset fish tank, and a view of the expansive reception area. It's clear you're entering something truly exceptional.

The open plan kitchen and reception room is flooded with natural light, thanks to full-height sliding doors and three roof lanterns. The German-made kitchen is a masterpiece, boasting top-tier integrated appliances, a Quooker tap, and Silestone work surfaces. The reception area offers underfloor heating, recessed ceiling mood lighting, and a sleek LED electric fireplace.

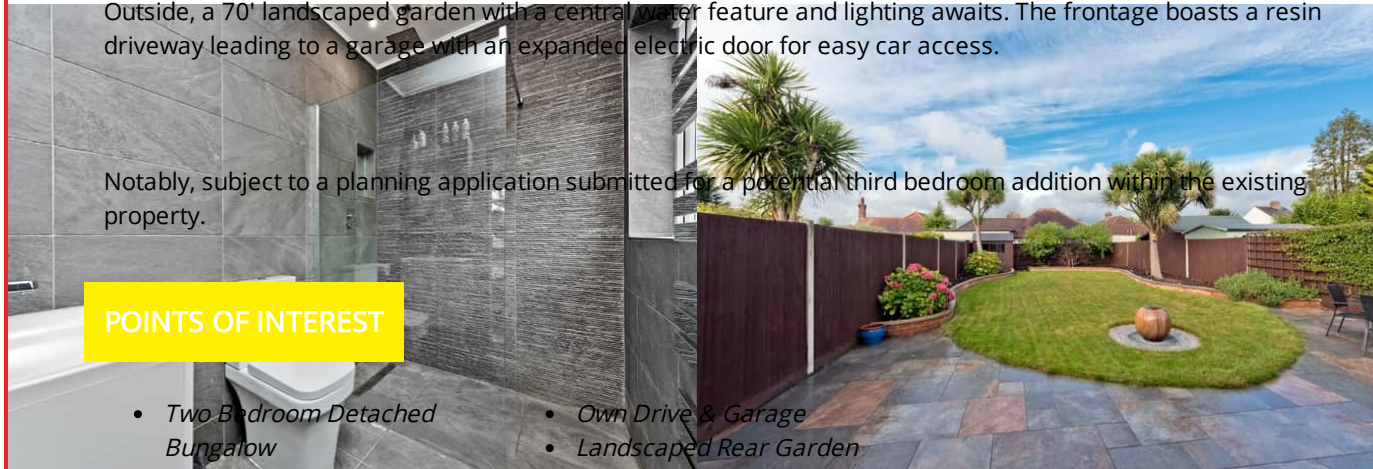
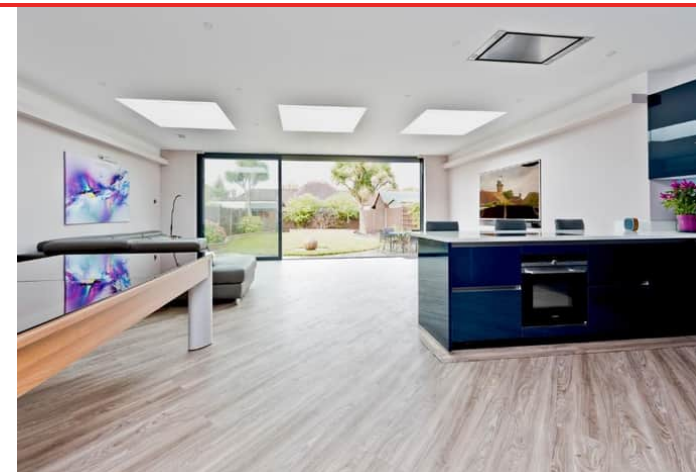
The master bedroom, with Amtico flooring and built-in wardrobes, features a luxurious en-suite shower room. Bedroom two is served by an equally lavish family bathroom.

Outside, a 70' landscaped garden with a central water feature and lighting awaits. The frontage boasts a resin driveway leading to a garage with an expanded electric door for easy car access.

Notably, subject to a planning application submitted for a potential third bedroom addition within the existing property.

POINTS OF INTEREST

- Two Bedroom Detached Bungalow
- Bespoke Kitchen
- Bathroom & Shower Room
- Own Drive & Garage
- Landscaped Rear Garden



ROOM DESCRIPTIONS

Front Door to

Entrance Hall

Radiator, access to loft

Open Plan Lounge/Kitchen/Family Room

26' 8" x 24' 3" (8.13m x 7.39m) Underfloor heating, double glazed window, double glazed sliding doors to garden

Bespoke Kitchen

Sink unit inset in roll top work surface, range of cupboards and units, breakfast bar, integral fridge freezer, integral dishwasher, fitted oven and hob, extractor

Bedroom 1

14' 8" x 9' 5" (4.47m x 2.87m) Radiator, fitted wardrobes, double glazed window

En-Suite Shower Room

Comprising shower cubicle, low level wc, wash hand basin, heated towel rail, tiled walls and floor, two double glazed windows

Bedroom 2

11' 10" x 8' 9" (3.61m x 2.67m) Radiator, cupboard housing boiler, two double glazed windows

Bathroom

Comprising panel enclosed bath with mixer tap, fitted shower, shower screen, low level wc, wash hand basin, heated towel rail, part tiled walls, double glazed window

Outside

Front Garden & Garage

Own drive with off street parking

Rear Garden

Patio area, mainly laid to lawn, garden shed

