

Old Were Court

Warminster, BA12 8FG

COOPER
AND
TANNER



£190,000 Leasehold

2 1 1 EPC C

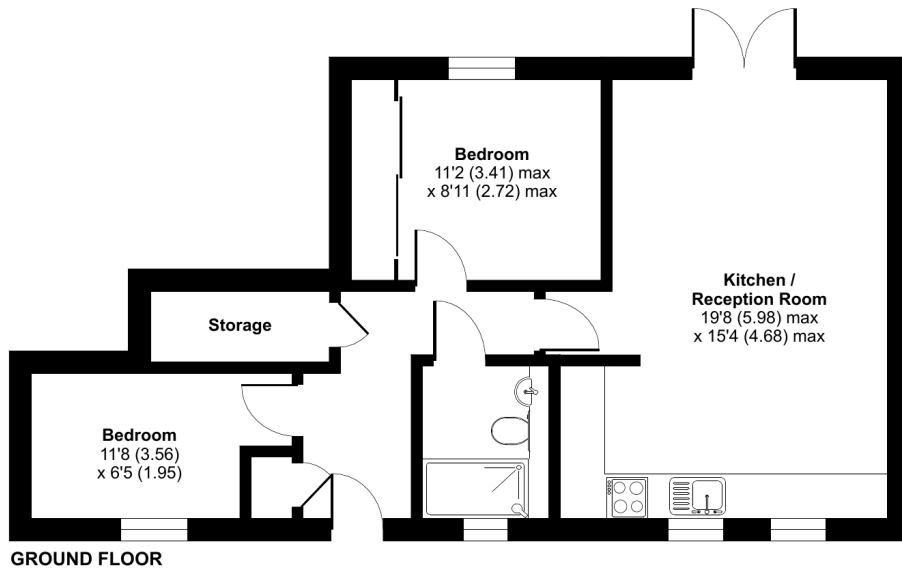
Description

Cooper and Tanner are pleased to present this well kept and recently upgraded two bedroom ground floor flat. Situated in the heart of town, the property offers easy access to local amenities and transport links. The accommodation comprises entrance hallway with built in storage, two bedrooms, bathroom and upgraded open plan kitchen/diner/reception room with doors leading into a small section of private garden. Outside, there is an allocated parking space to the front and at the rear a well kept communal garden. Viewings are highly advised.

Old Were Court, Warminster, BA12

Approximate Area = 598 sq ft / 55.5 sq m

For identification only - Not to scale



Floor plan produced in accordance with RICS Property Measurement 2nd Edition, incorporating International Property Measurement Standards (IPMS2 Residential). © nichcom 2025. Produced for Cooper and Tanner. REF: 1331795



Features

- Town centre location
- Two bedroom
- Open plan kitchen/dining/sitting room
- Close to local amenities
- Bathroom
- No work required
- Recently updated and decorated throughout
- Allocated off road parking

Local Information

- **Tenure** Leasehold
- **EPC Rating** C

WARMINSTER OFFICE

Telephone 01985 215579

48-50, Market Place, Warminster, Wiltshire BA12 9AN

warminster@cooperandtanner.co.uk

**COOPER
AND
TANNER**

Important Notice: These particulars are set out as a general outline only for the guidance of intended purchasers and do not constitute, nor constitute part of, an offer or contract. All descriptions, dimensions, reference to condition and necessary permissions for use and occupation, warranties and other details are given without responsibility and any intending purchasers should not rely on the same as statements or representations of fact but must satisfy themselves by inspection or otherwise as to the correctness of each of them.



RICS



OnTheMarket