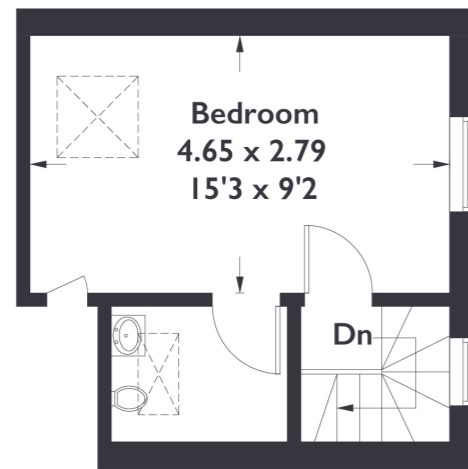
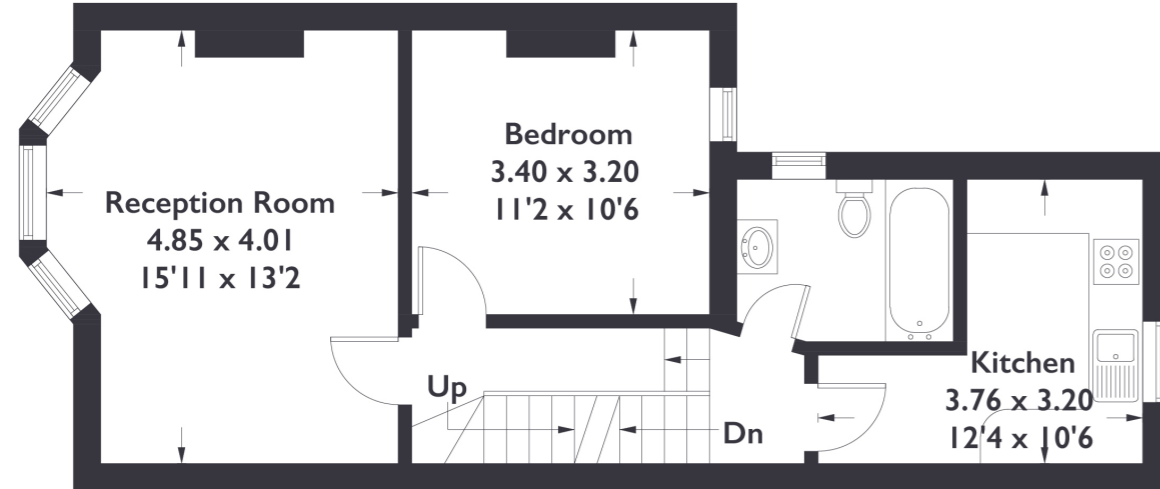


Elthorne Park Road, W7

Approximate Gross Internal Area = 73.1 sq m / 787 sq ft



Second Floor



First Floor



Ground Floor

Measured in accordance with RICS Code of Measuring Practice. To be used for identification and guidance purposes only.
Whilst every care is taken in the preparation of this plan, please check all dimensions, shapes and compass bearings before making any decisions reliant upon them.
www.london58.com © 2023 hello@london58.com



2 BEDROOM FLAT

Elthorne Park Road, W7

£499,950

This delightful Edwardian first-floor flat, nestled in a charming neighbourhood that perfectly balances the best of Northfields and Hanwell. This cosy home offers a truly convenient lifestyle, being located within easy reach of all the amenities these sought-after areas have to offer.

FEATURES

- Share Of Freehold
- Two Bedrooms
- Loft Conversion
- Boston Manor Tube Station (Picadilly Line)
- Fielding Primary School
- Elthorne Park High School
- EPC Rating D



2 BEDROOM FLAT

Elthorne Park Road, W7 £499,950

The natural light welcomes you the moment you ascend the stairs. Step inside, and you'll discover a bright and airy space, filled with an abundance of sunlight that pours through the large bay windows, creating an inviting and warm atmosphere.

This charming abode boasts two wonderfully sized bedrooms, providing ample space for storage. The living room is equally delightful, offering a pleasant area to unwind and entertain, with its own set of expansive windows that bask the room in even more light. Adding to its allure, this flat extends over two floors, with a particularly spacious en-suite bedroom upstairs, ensuring privacy and comfort for its lucky occupants. The convenience of this location is second to none, with the vibrant amenities of Northfield Avenue just a stone's throw away, offering an array of shops, eateries, and local conveniences. EPC Rating D.

