

Maurer Court, Renaissance Walk, London. £2,300 SE10 0SR.

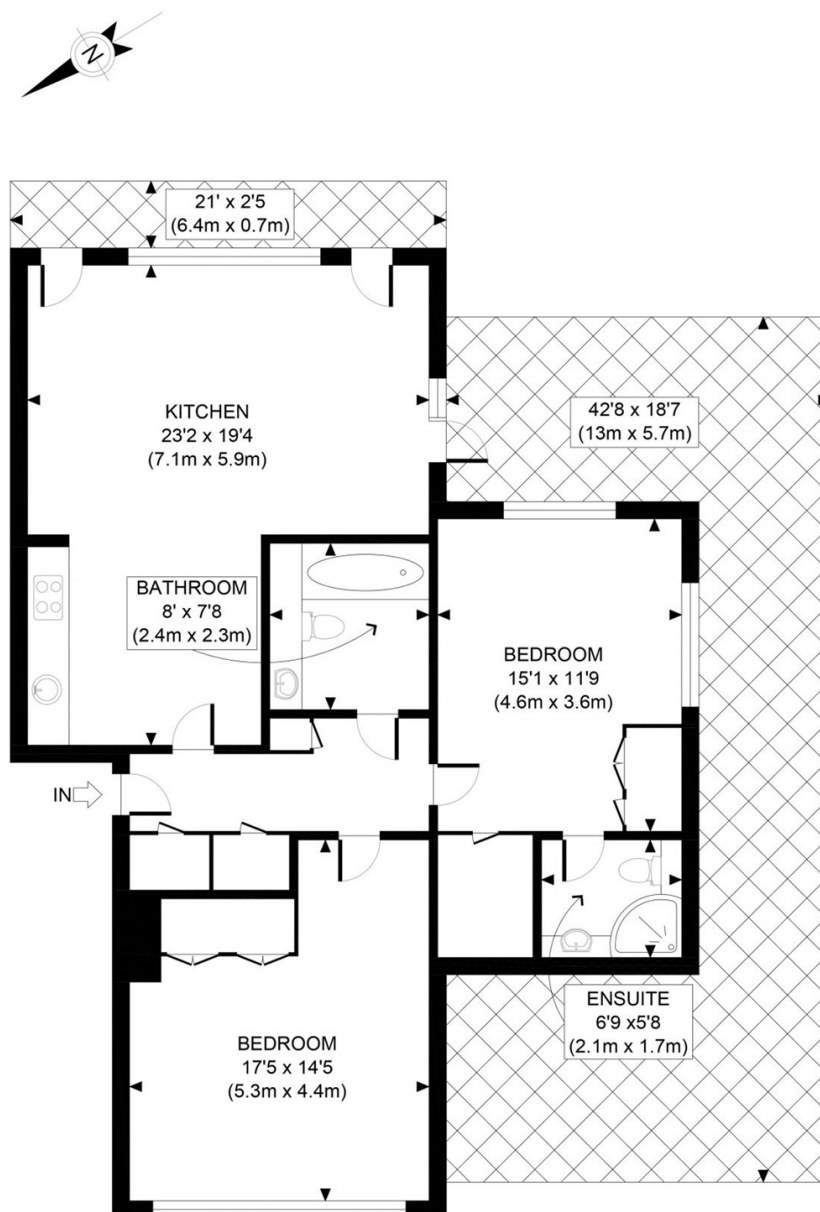
Outstanding top floor apartment situated in the sought after Maurer Court. With a spectacular far reaching view down the River Thames, the property has arguably one of the best positions on the development. Offered in fantastic condition the apartment offers stunning vaulted ceilings, two double bedrooms, two bathrooms ample storage space and a beautiful modern fitted kitchen. Further benefits include a large wraparound private terrace, separate balcony and an allocated secure parking space.

There are also 24 hour concierge services and onsite shops. The development is located a short walk from North Greenwich tube station (Jubilee Line), the Emirates Cable Cars and the O2 with the many attractions within, including bars and restaurants.

Viewing by appointment with 1st avenue.

Call: 020 8293 8600

1st avenue, 128 Metcalfe Court, West Parkside, London SE10 0EL
email: info@1stavenue.co.uk



FIFTH FLOOR
GROSS INTERNAL
FLOOR AREA 1022 SQ FT

APPROX. GROSS INTERNAL FLOOR AREA 1022 SQ FT / 95 SQM

Ref:

Copyright **photoplan** 

Disclaimer: Floor plan measurements are approximate and are for illustrative purposes only. While we do not doubt the floor plan accuracy and completeness, you or your advisors should conduct a careful, independent investigation of the property in respect of monetary valuation

Viewing by appointment with 1st avenue.

Call: 020 8293 8600

1st avenue, 128 Metcalfe Court, West Parkside, London SE10 0EL
email: info@1stavenue.co.uk