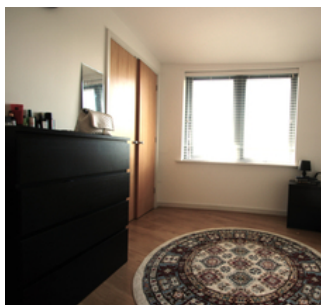




**£290,000**  
Leasehold

## LANACRE AVENUE, LONDON. NW9

- Top Floor Apartment
- Modern and Stylish Interiors
- Intergrated Kitchen
- Open Plan Reception and Diner
- Private Decking
- Large Double Bedroom
- Fitted Wardrobes
- White Tiled Bathroom
- Ample of Storage
- Natutral Lighting
- One Parking Space
- Graham Park and Lake
- Colindale Tube Station



### PROPERTY SUMMARY

We are proud to present a beautiful modern and stylish one bedroom apartment situated on Lanacre Avenue, Colindale. This property is located on the top floor, upon entering the property you are greeted with natural lighting, spacious open plan reception and diner area with a private rear access to a decking balcony. A perfect way to admire a scenic view of Grahame Park with its attractive lake. Kitchen - 2.54 x 2.37 - Lounge - 3.74 x 5.22 narrowing to 3.32 - Bedroom - 2.71 x 3.64 - Bathroom - 1.95 x 2.23. The length of the lease 103 years. Service Charge is £1,632 per annum.

We then step into double bedroom with ample of storage and fitted in wardrobes, laminated flooring, double glazed casement windows, partial integrated kitchen with tiled flooring and all white tiled suite bathroom. Further features include one parking space, video entry phone, inbuilt storage and well maintained communal areas. Viewings Upon Request.

0208 201 5454

[info@cubesresidential.com](mailto:info@cubesresidential.com)