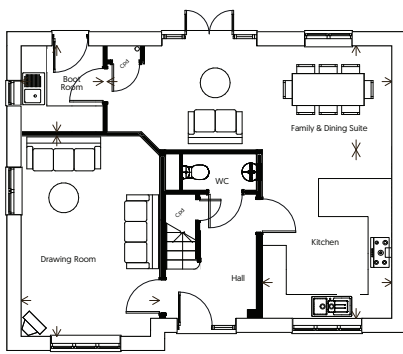
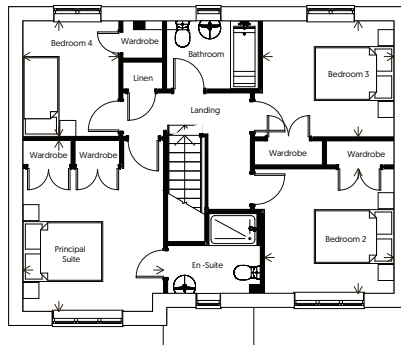


Dyrham



GROUND FLOOR



FIRST FLOOR

DIMENSIONS

Drawing Room	11' 5" x 16' 6"	3.5m x 5.0m
Kitchen	10' 8" x 13' 10"	3.3m x 4.2m
Family & Dining Suite	23' 5" x 8' 7"	7.1m x 2.6m
Boot Room	6' 9" x 7' 1"	2.1m x 2.2m
Principal Suite	11' 7" x 14' 1"	3.5m x 4.3m
Bedroom 2	10' 8" x 10' 3"	3.3m x 3.1m
Bedroom 3	10' 10" x 9' 7"	3.3m x 2.9m
Bedroom 4	7' 11" x 9' 6"	2.4m x 2.9m

03.05.2022 Please note plot 11 is a handed version of the floor plan shown above.

The information and images we provide are issued in good faith and designed to give a flavour of our development and house types. This may not reflect a specific plot and does not form part of any contract. Details such as final finishes, landscaping, handing and windows will vary. Layouts including bathroom and kitchen layouts are indicative only and designs may change due to our process of continuous product development. Some house types include areas of reduced headroom. All dimensions are approximate only. Images used in marketing materials may be computer generated or photography of previous developments.

Our sales consultant will be delighted to discuss plot specific details prior to any formal reservation.

