



Shurdington



# Shurdington

Main Road, Shurdington, Cheltenham, GL51 4XJ

£675,000 Freehold

A charming 4/5 bedroom, character filled, family house situated within this popular location and offered for sale with no onward chain.

NO ONWARD CHAIN • reception hall • downstairs shower room • living room • dining room • kitchen/breakfast room • utility room • garden room • cellar • 4 bedrooms • dressing room/bedroom 5 • ensuite shower and bathroom • driveway & ample parking

## Description

A character filled period cottage, which has been extended and adapted to create practical and versatile living space. This handsome red brick home comprises a welcoming entrance hall, a large living room with an abundance of period features including an impressive fireplace, a cosy snug with a fireplace, separate dining room with French doors leading to an enclosed courtyard garden, an additional garden room, kitchen/breakfast room with utility area, a useful boot room, cellar, a ground floor bedroom, and a ground floor shower room. On the first floor, there is a good size galleried landing with 3/4 further generous bedrooms and a family bathroom. The master bedroom has an en suite shower room and dressing room which could be easily converted into an additional bedroom if required. Outside, there is a good size well stocked front garden, and a driveway providing ample off-road parking. To the rear of the property, there are two low maintenance pretty courtyards ideal for outdoor dining. Tewkesbury Borough Council - Tax Band E.



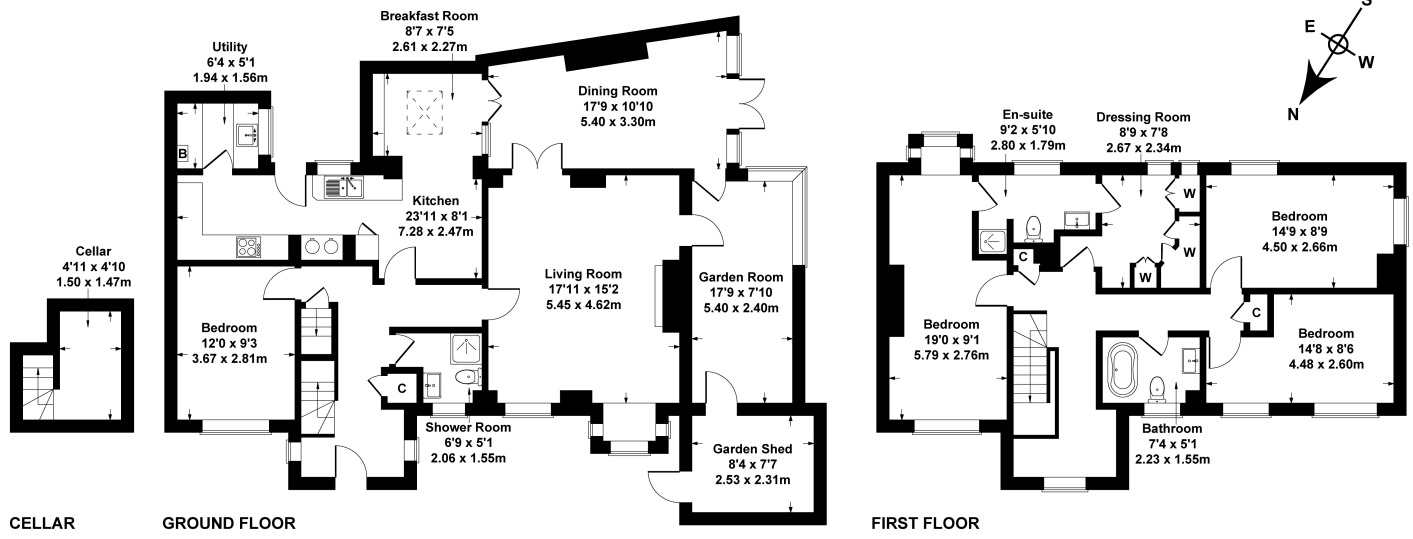


### Situation

Situated in a popular village on the outskirts of Cheltenham with excellent road links including the M5, M4 and A417, also close to supermarkets, schools and glorious countryside. Cheltenham is a vibrant Regency town, best known for its beautiful architecture, excellent shopping and horse racing at the world famous Prestbury Park Racecourse. Cheltenham also plays host to the music, jazz, science and literature festivals currently held in Imperial Gardens.



**Brigarde House**  
Approximate Gross Internal Area  
2131 sq ft - 198 sq m



SKETCH PLAN FOR ILLUSTRATIVE PURPOSES ONLY  
All measurements walls, doors, windows, fittings and appliances, their sizes and locations, are approximate only. They cannot be regarded as being a representation by the seller, nor their agent.  
Produced by Potterplans Ltd. 2024

Energy Efficiency Rating		
	Current	Potential
Very energy efficient - lower running costs		
(92+) <b>A</b>		
(81-91) <b>B</b>		
(69-80) <b>C</b>		77
(55-68) <b>D</b>	57	
(39-54) <b>E</b>		
(21-38) <b>F</b>		
(1-20) <b>G</b>		
Not energy efficient - higher running costs		
<b>England, Scotland &amp; Wales</b>	EU Directive 2002/91/EC	

Nick Griffith Estate Agents for themselves and for the vendors or lessors of this property whose agents they are, give notice that: (i) The particulars are produced in good faith, are set out as a general guide only and do not constitute part of any contract. (ii) No person in the employment of Nick Griffith Estate Agents has any authority to make any representation or warranty whatever in relation to this property.