

9 Whittle Court,
Knowlhill, Milton Keynes, MK5 8FT

Tel: 01908 231 551
mail@elevationstateagents.com



**219 Newport Road, New Bradwell, Milton
Keynes, Buckinghamshire, MK13 0AW**

£2,875 pcm

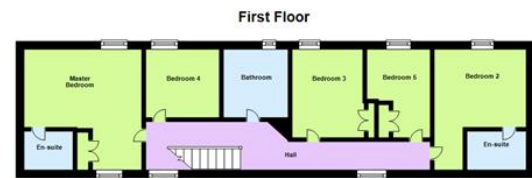
- Characteristic Barn Conversion
- Five Double Bedrooms
- Two Ensuite Bathrooms & Main Bath
- Courtyard Front Garden & Landscaped Rear Garden
- Open Plan Living Accommodation
- Over 2,500 sqft of living
- Outhouse building with shower room
- South Facing Garden
- EPC- C
- Council Tax Band- F
- Viewings by appointment only





Disclaimer

Whilst we have endeavoured to prepare our sales particulars accurately none of the services, appliances or equipment have been tested. A buyer should satisfy themselves on such matters prior to purchase. Any measurements or distances mentioned in these particulars are for guide reference only. If such particulars are fundamental to a purchase, buyers should rely on their own enquiries. All enquiries should be directed to Elevation Estate Agents in the first instance.



Floor plans are for layout purposes only. Measurements are approximate and subject to inaccuracies.
Plan produced using PlanItip.

