



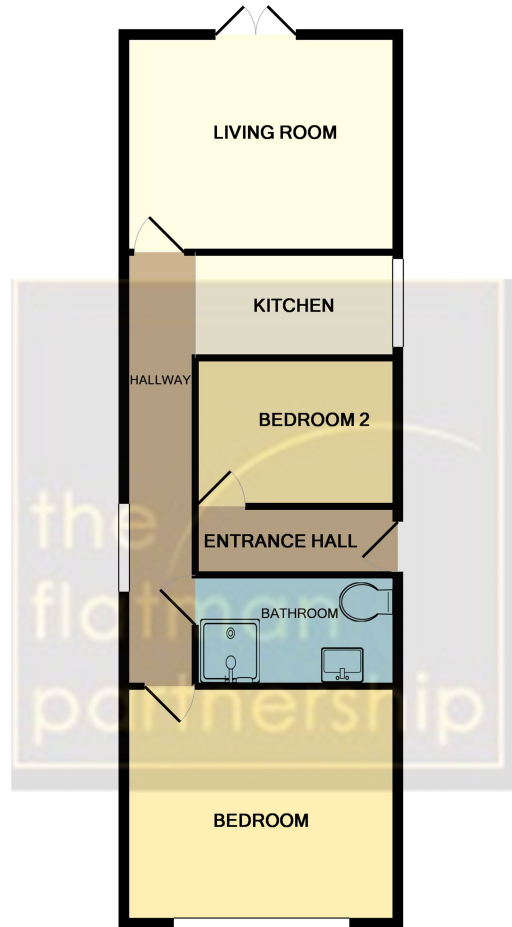
Flat 2 Alton Court Willoughby Road, Langley, Berkshire. SL3 8JQ.
£1,400

- HOMLEY TWO BEDROOM MAISONETTE
- GROUND FLOOR
- WALKING DISTANCE TO LANGLEY MAINLINE RAILWAY STATION
- EASY ACCESS TO M4 & M25 MOTORWAYS
- GOOD SIZED LIVING ROOM
- PRIVATE REAR GARDEN
- UNFURNISHED
- AVAILABLE MID FEBRUARY 2024

Flat 2 Alton Court Willoughby Road, Langley, Berkshire. SL3 8JQ.

£1,400

Homely two-bedroom ground-floor maisonette in the heart of Langley Village. Walking distance to Langley Mainline Railway Station and easy access to M4 & M25 motorways. Features include an entrance hall, good-sized living room, kitchen, shower room, large double bedroom, a further bedroom, private rear garden, and on-street parking. The property comes unfurnished and is available mid February 2024.



Whilst every attempt has been made to ensure the accuracy of the floor plan contained here, measurements of doors, windows, rooms and any other items are approximate and no responsibility is taken for any error, omission, or mis-statement. This plan is for illustrative purposes only and should be used as such by any prospective purchaser. The services, systems and appliances shown have not been tested and no guarantee as to their operability or efficiency can be given
Made with Metropix ©2019

