

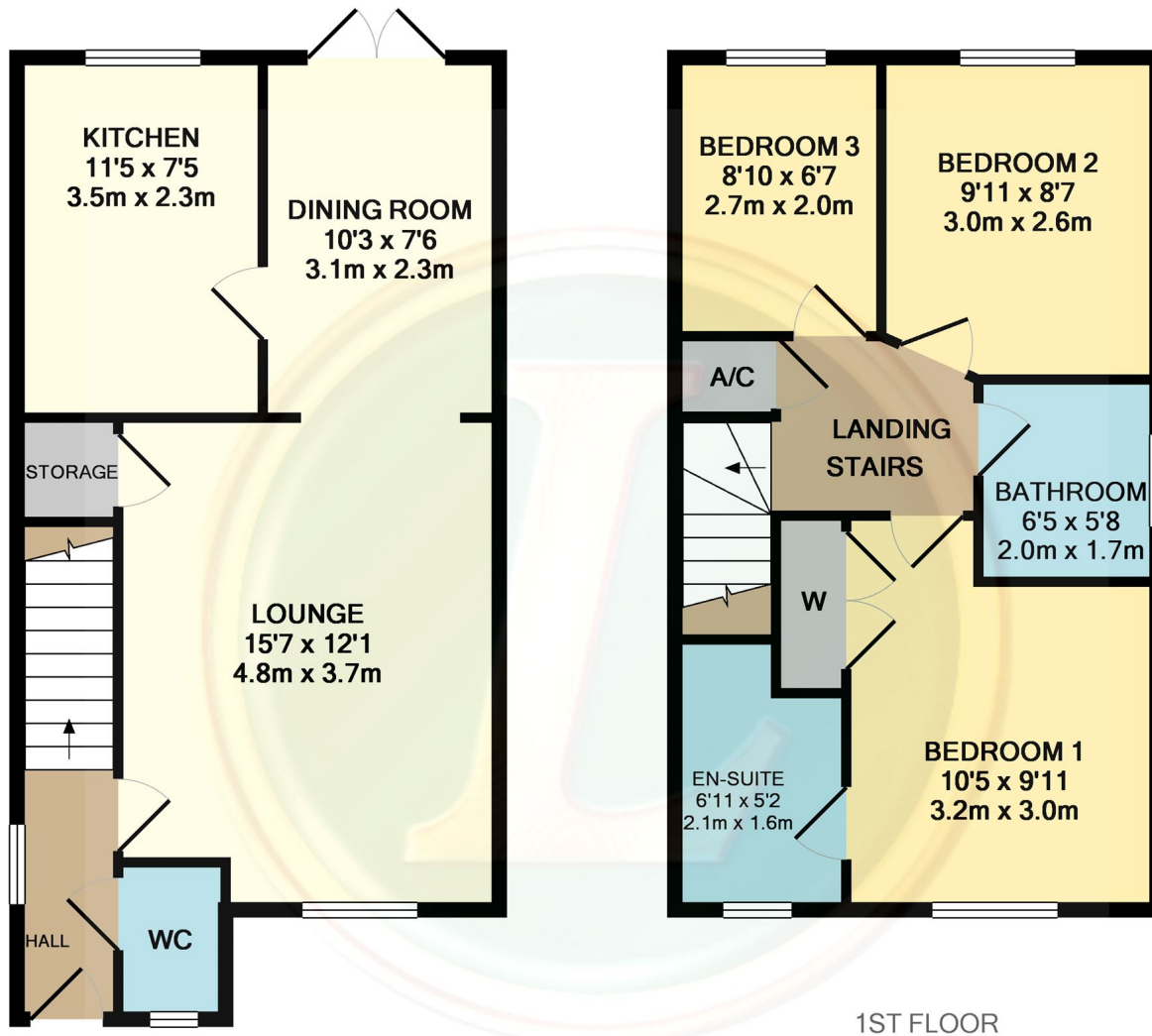


35 Harrier Mill, Henlow, Bedfordshire, SG16 6BQ

£375,000

Three bedroom detached family home situated in a small cul-de-sac. Offered with the benefits of a downstairs cloakroom, spacious lounge, dining room and a fitted kitchen. Upstairs are three bedrooms, a family bathroom and an en-suite to the master bedroom. Outside is a south facing low maintenance rear garden with an open outlook backing onto allotments. Off road parking is provided by both a garage and driveway. Available chain free.

Lane &
BENNETTS



GROUND FLOOR

Measurements are approximate. Not to scale. Illustrative purposes only
Made with Metropix ©2015

- THREE BEDROOM DETACHED FAMILY HOME
- SPACIOUS LOUNGE & DINING ROOM
- FITTED KITCHEN
- EN-SUITE TO MASTER BEDROOM
- FAMILY BATHROOM & DOWNSTAIRS CLOAKROOM
- LOW MAINTENANCE SOUTH FACING REAR GARDEN
- OPEN OUTLOOK BACKING ONTO ALLOTMENTS
- OFF ROAD PARKING VIA GARAGE & DRIVEWAY
- AVAILABLE CHAIN FREE
- EPC BAND C / COUNCIL TAX BAND E

