



Merle Avenue
Harefield, Middlesex, UB9 6DE



£1,550 pcm

Situated in one of the most sought after cul-de-sacs in Harefield, we offer this excellent first floor maisonette surrounded by beautiful communal gardens with the added benefit of a garage and off-street parking. Internally there are two double bedrooms, a hallway, a spacious front aspect reception room, a modern kitchen/breakfast room and a bathroom. Harland Court is literally a stone's throw from the amenities of the village and is within walking distance of Harefield Junior School, the village green and Harefield Hospital.

Entrance Lobby

UPVC front door. Two double glazed windows, one overlooking rear aspect and the other, side aspect. Radiator. Stairs leading to first floor. Door with coloured glass leaded light inset leading to:

First Floor

Hallway

Two large storage cupboards, one housing electric consumer unit. Down lighters. Wall thermostat control. Laminate flooring. Radiator. ..

Living Room

14' 1" x 13' 1" (4.29m x 3.99m) Laminate flooring. Down lighters. Two wall light point. Radiator. Double glazed window over looking front aspect.

Kitchen

10' 2" x 9' 2" (3.10m x 2.79m) Well fitted with high gloss wall and base units. Wood effect work surfaces with tiled splash back. Stainless steel sink unit with mixer tap and drainer. Four ring gas hob with extractor hood over. Fitted double oven. Built in dishwasher. Space for upright fridge/ freezer. Recess area plumbed for washing machine and wall mounted central heating boiler. Down lighters. Two double glazed windows over looking rear aspect.

Bedroom 1

12' 2" x 11' 10" (3.71m x 3.61m) Down lighters. Radiator. Laminate flooring. Double glazed window over looking front aspect.

Bedroom 2

10' 6" x 9' 10" (3.20m x 3.00m) Laminate flooring. Radiator. Double glazed window over looking rear aspect.

Bathroom

6' 7" x 6' 7" (2.01m x 2.01m) Fully tiled with a white suite incorporating bath with wall shower unit and hand held microphone shower unit. w.c and wash hand basin. with mixer tap and cupboard under. Heated chrome towel rail. Downlighters. Expel air. Double glazed window over looking rear aspect.

Outside

Garage

Single garage in a block with up and over metal door.

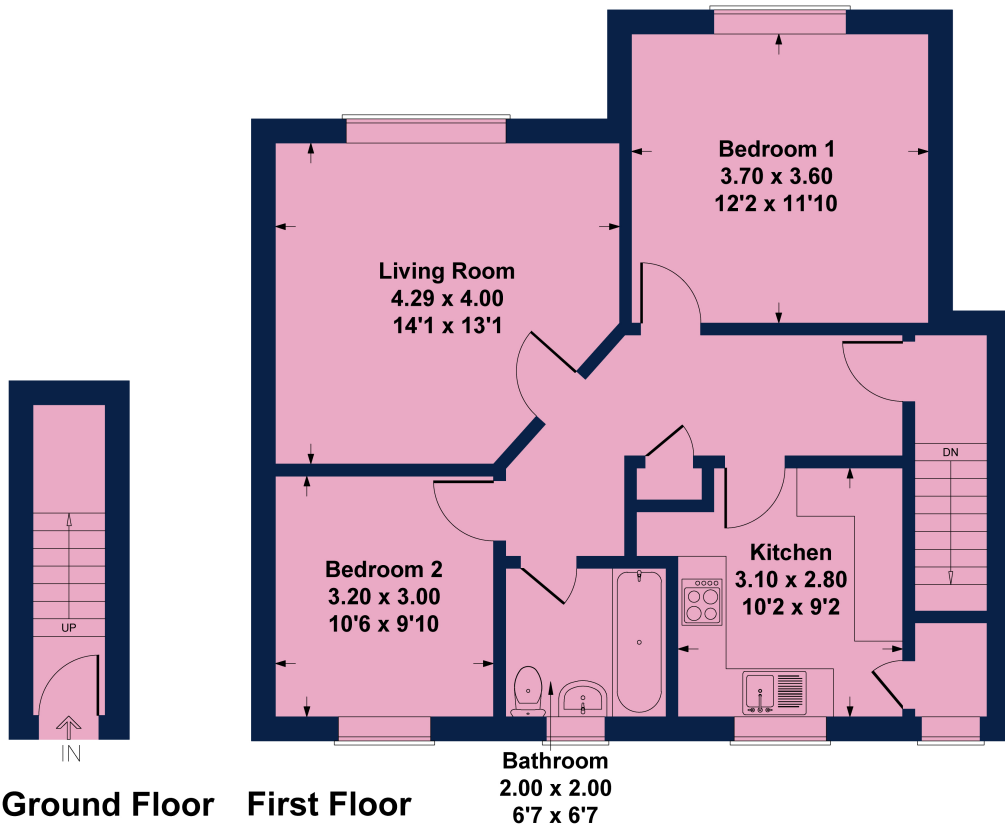
Communal Gardens

Well maintained communal garden with trees, shrubs and large area of lawn.



4 Harland

Approximate Gross Internal Area
Ground Floor = 3.4 sq m / 37 sq ft
First Floor = 66.6 sq m / 717 sq ft
Total = 70.0 sq m / 754 sq ft



Not to Scale. Produced by The Plan Portal 2024
For Illustrative Purposes Only.



Important Notice: Rodgers Estate Agents give notice that their solicitors and any joint agents give notice that:

1. They are not authorised to make or give any representations or warranties in relation to the property either here or elsewhere, either on their own behalf or on behalf of their client or otherwise. They assume no responsibility for any statement that may be made in these particulars. These particulars do not form any part of any offer or contract and must not be relied upon as statements or representation of fact.

2. Any areas, measurements or distances are approximate. The text, photographs and plans are for guidance only and are not necessarily comprehensive. It should not be assumed that the property has all necessary planning, building regulation or other consents and Rodgers Estate Agents have not tested any appliances, equipment or facilities. Purchasers must satisfy themselves by inspection or otherwise.

Energy Efficiency Rating		
	Current	Potential
Very energy efficient - lower running costs		
(92+) A		
(81-91) B		
(69-80) C	73	76
(55-68) D		
(39-54) E		
(21-38) F		
(1-20) G		
Not energy efficient - higher running costs		
England, Scotland & Wales	EU Directive 2002/91/EC	

30 Market Place
Chalfont St Peter
Buckinghamshire
SL9 9DU

csp@roddersestates.com

5 Park Lane
Harefield
Middlesex
UB9 6BJ

harefield@roddersestates.com

For further information or an appointment to view please call: Harefield 01895 823333 Market Place 01753 880333