



Flat 65 Printing House Square, Martyr Road, GUILDFORD, Surrey. GU1 4AJ

- Town Center Location
- Very Well Presented
- Fitted Kitchen
- Double Bedroom
- Bathroom
- Lift Access
- Convenient Location For Main Line Station
- Must Be Seen
- No Onward Chain



PROPERTY DESCRIPTION

Situated in the Town centre this very well presented flat comes to the market offering a fabulous fitted kitchen open plan with the lounge, generous double bedroom with fitted wardrobes and lovely bathroom. Further benefits include a private balcony, lift access and parking. Local amenities are literally on your doorstep and Guildford and London Road station are nearby but to fully appreciate what this flat has to offer viewings are highly recommended. NO ONWARD CHAIN.



ROOM DESCRIPTIONS

Ground Floor

Communal Entrance Hall

Stairs and lift to all floors

Second Floor

Landing

Door to flat

Entrance Hall

Doors to:

Kitchen

Range of eye and base level units, built in appliances, open plan to:

Lounge

Rear aspect double glazed doors leading to balcony, wood effect flooring.

Bedroom

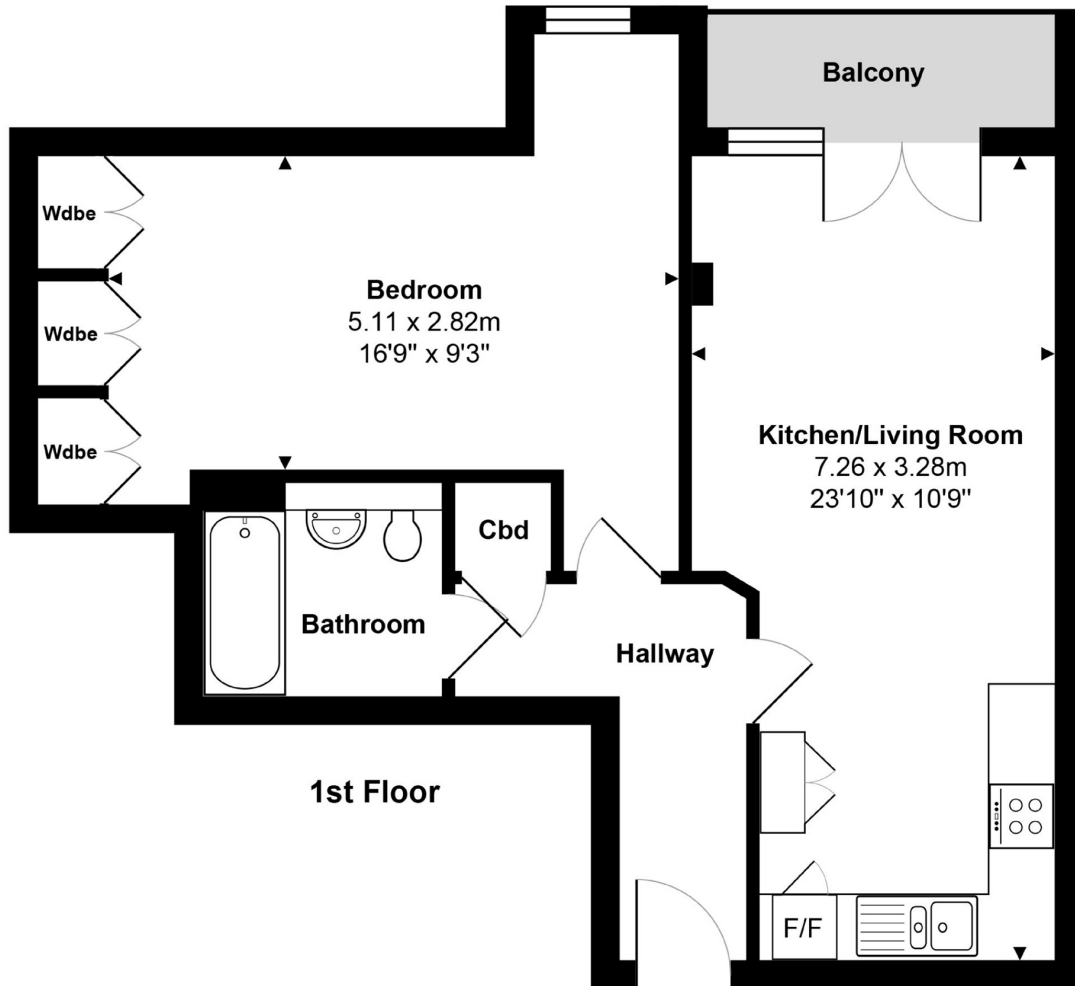
Rear aspect double glazed window, fitted wardrobes.

Bathroom

Fully tiled, shower over panel enclosed bath, low level w.c, wash hand basin.



FLOORPLAN



Total Approx. Gross Internal Area 53.0 m² ... 571 ft² (excluding balcony)

All measurements are approximate and for display purposes only. Not to scale.

Guildford Office
12c, Worplesdon Road, Guildford, GU2 9RW
01483 576300
info@hippsestateagents.co.uk