

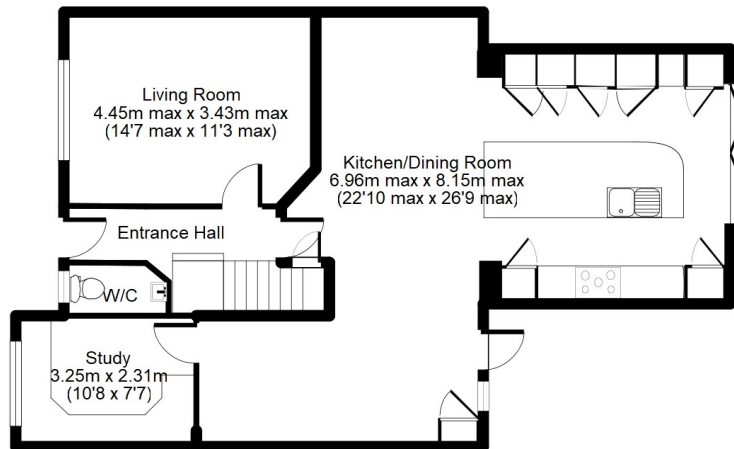
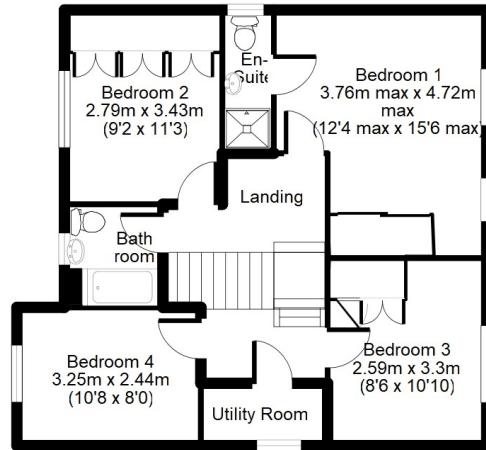
## Curtis Close, CAMBERLEY, Surrey GU15 1QP

OFFERS IN EXCESS OF £600,000

\*Virtual Tour Available Upon Request\*

Jigsaw Estates are very proud to offer such a stylishly presented & extended detached family home, situated at the top of a cul-de-sac on the popular Wellington Park development of Camberley. Once you step through the front door you feel the underfloor heating which leads out into the huge kitchen/dining/family room, which in turn wraps around to the fitted out study at the front. The kitchen was supplied by Applewood in Ascot and is German manufactured with a boiling water tap, water softener and oozes quality. The bi fold doors lead onto the small, but adequate garden whereby more money has been spent in putting in quality artificial lawn and a beautiful and extensive patio. There is also a cozy living room to the front which has been recently re-carpeted along with the rest of the carpeted areas. Upstairs there are four double bedrooms with a re-fitted en-suite shower room, family bathroom and a utility room, what more could you want!





Approx. Total Floor Area:  
148 Sq M = 1592 Sq Ft

Floorplan is for illustration purposes only.  
All measurements are approximate and should be verified

- SUPERBLY EXTENDED & VERY STYLISH IN DESIGN
- POPULAR WELLINGTON PARK
- OPEN PLAN KITCHEN/DINING/FAMILY ROOM WITH GERMAN MANUFACTURED KITCHEN WITH BIFOLD DOORS ONTO REAR GARDEN
- SEPERATE STUDY
- CLOAKROOM
- FOUR DOUBLE BEDROOMS
- TUCKED AWAY, TOP OF CUL-DE-SAC POSITION
- UNDERFLOOR HEATING
- SEPERATE LIVING ROOM
- COMPACT AND PRIVATE REAR GARDEN WITH ARTIFICIAL LAWN AND LARGE, MODERN PATIO.

### Energy Efficiency Rating

	Current	Potential
Very energy efficient - lower running costs		
(92 to 100) <b>A</b>		
(81 to 91) <b>B</b>		<b>83</b>
(69 to 80) <b>C</b>	<b>74</b>	
(55 to 68) <b>D</b>		
(39 to 54) <b>E</b>		
(21 to 38) <b>F</b>		
(1 to 20) <b>G</b>		
Not energy efficient - higher running costs		
<b>England, Wales &amp; N.Ireland</b>	EU Directive 2002/91/EC	