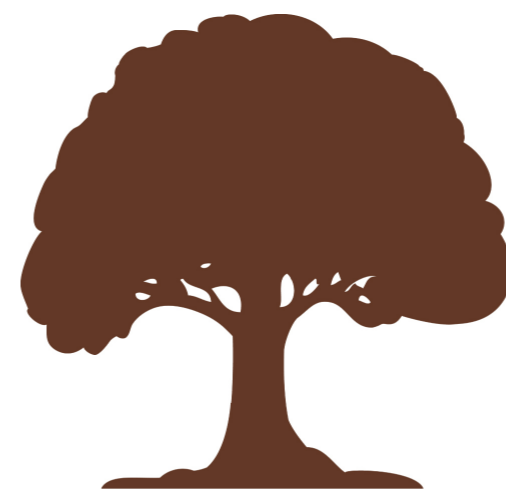


Datchet Lodge is situated in the picturesque Thameside village of Datchet and overlooks the River Thames. A short walk to local amenities and Datchet railway station providing services to London Waterloo and Windsor.

A quintessential Grade II listed property built in 1740 is steeped with Georgian architecture, Offering accommodation of approx. 2,000 sq. Ft.

This stunning first floor apartment offers premium accommodation throughout with panoramic river side views. Having retained many of its original features it benefits from high ceilings, feature fireplaces, decorative architrave and picture rails, and sash windows. The focal point of this apartment is its spectacular drawing room with three large sash windows overlooking the river, an impressive interconnecting dining room. The kitchen with fitted units, butler style sink and integrated units benefits from two large sash windows overlooking the gardens. The inner hallway with fitted faux book shelved cupboard doors and a stain glass rooflight continues the elegance of this apartment leading to the study and bedrooms.

The generous sized master bedroom with a rear aspect overlooking the garden has fitted wardrobes and a four-piece ensuite. Bedroom 2 with a front aspect is in excess of 16ft with a further ensuite. Bedroom 3 is also a good-sized double room with a front aspect. A further cloakroom for guests. To the front of the property the pedestrian entrance is accessed via a large ornate wrought iron gate. The well-maintained grounds with electric gates to the side for vehicle access.



Oakwood Estates

Property Information

-  GRADE II LISTED APARTMENT
-  OVERLOOKING THE RIVER THAMES
-  THREE DOUBLE BEDROOMS
-  VILLAGE LOCATION
-  IN EXCESS OF 2,000 SQ. FT.
-  LARGE DRAWING ROOM 25 + FT
-  THREE RECEPTION ROOMS
-  COUNCIL BAND - G

					
x3	x3	x3	x2	Y	N
Bedrooms	Reception Rooms	Bathrooms	Parking Spaces	Garden	Garage

Schools

PRIMARY SCHOOLS

Datchet St Mary's CofE Primary School 0.2 miles away State school

Eton End School Trust (Datchet) Limited 0.4 miles away Independent school

St George's School 1 mile away Independent school

Eton Porny CofE First School 1.2 miles away State school

SECONDARY SCHOOLS

Churchmead Church of England (VA) School 0.2 miles away State school

St George's School 1 mile away Independent school

Transport Links

Nearest stations:

Datchet (0.1 miles)

Windsor & Eton Riverside (1.1 miles)

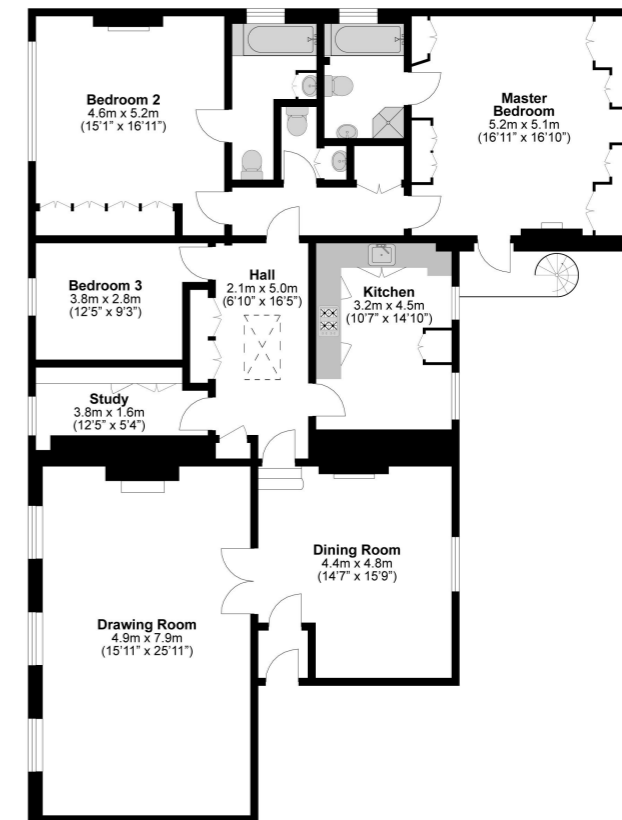
Windsor & Eton Central (1.2 miles)

Council Tax

Floor Plan



Total Approximate Floor Area
2067 Square feet
192 Square metres



Illustrations are for identification purposes only, measurements are approximate, not to scale.

Prospective purchasers should be aware that these sales particulars are intended as a general guide only and room sizes should not be relied upon for carpets or furnishing. We have not carried out any form of survey nor have we tested any appliance or services, mechanical or electrical. All maps are supplied by Goview.co.uk from Ordnance Survey mapping. Care has been taken in the preparation of these sales particulars, which are thought to be materially correct, although their accuracy is not guaranteed and they do not form part of any contract.

