



Plot 1 Pennine Lodge, Medomsley Mews, Medomsley, Consett. DH8 6RD

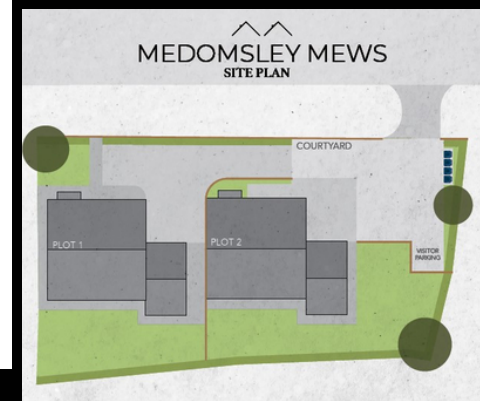
MEDOMSLEY MEWS - Two beautifully built Dormer bungalows in an idyllic rural setting.

Carefully and sympathetically designed and constructed by Forric Homes in the beautiful village of Medomsley. These stunning homes are designed and built for today's lifestyles with care, attention to detail and a superb quality finish. There are only two of these beautiful detached homes, with outdoor spaces front and back, garage and driveway parking.

With only two properties available at this exclusive development, contact us today as we anticipate high levels of interest.

PLEASE NOTE - PLOT 2, CHEVIOT LODGE IS NOW RESERVED

Photo's Indicative Only



£345,000 Freehold

PROPERTY DESCRIPTION

Forric Homes presents an exclusive offering - two exquisitely crafted detached homes located in the charming village of Medomsley, in the heart of rural County Durham. These luxurious homes have been designed with contemporary lifestyles in mind, featuring meticulous attention to detail and top-notch finishing.

Constructed using locally sourced stone, the development seamlessly blends in with the picturesque surroundings, reflecting the architectural style of the area. Each residence features a garage, parking, and a spacious garden - providing the perfect balance between countryside living and easy access to local amenities such as shops and pubs.

This is a rare opportunity to own a home that offers a semi-rural lifestyle in the Derwent Valley. Experience the beauty of this peaceful region with its breathtaking scenery, open spaces, and tranquil hills and valleys just a few minutes away. Don't miss out on the chance to make one of these stunning homes your own.

FEATURES

- 3 Bedroom Detached Home with Attached Garage
- Fabulous New Build Home
- Medomsley Mews - Coming Soon
- Village location with Elevated Countryside Views
- 10 Year ICW New Homes Warranty
- Guaranteed EPC Rating of B or Above
- Plot 2 NOW RESERVED



ROOM DESCRIPTIONS

Living / Snug

Approx 3.85m x 3.81m

Open Plan Kitchen / Diner

Approx 4.8m x 3.28m

Bedroom One

Approx 3.72m x 3.06m

Ensuite 1

Office

Approx 3.06m x 2.00m

Bedroom Two

Approx 3.63m x 3.50m

Bedroom Three

Approx 4.87m x 2.34m

Bathroom

Utility Room

Approx 1.62m x 1.79m

W/C

Store

Garage

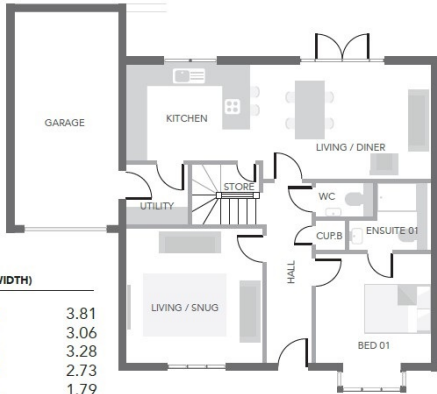
Approx 3.00m x 6.00m



FLOORPLAN

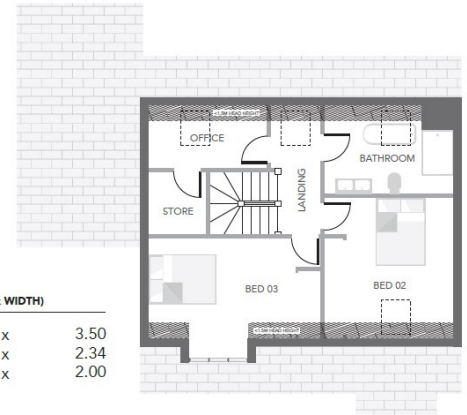


Ground Floor



ROOM	SIZE (LENGTH x WIDTH)	
Living / Snug	3.85	x 3.81
Bed 01	3.27	x 3.06
Living / Diner	4.80	x 3.28
Kitchen	3.81	x 2.73
Utility	1.62	x 1.79
Garage	3.00	x 6.00

First Floor



ROOM	SIZE (LENGTH x WIDTH)	
Bed 02	3.63	x 3.50
Bed 03	4.87	x 2.34
Office	3.6	x 2.00