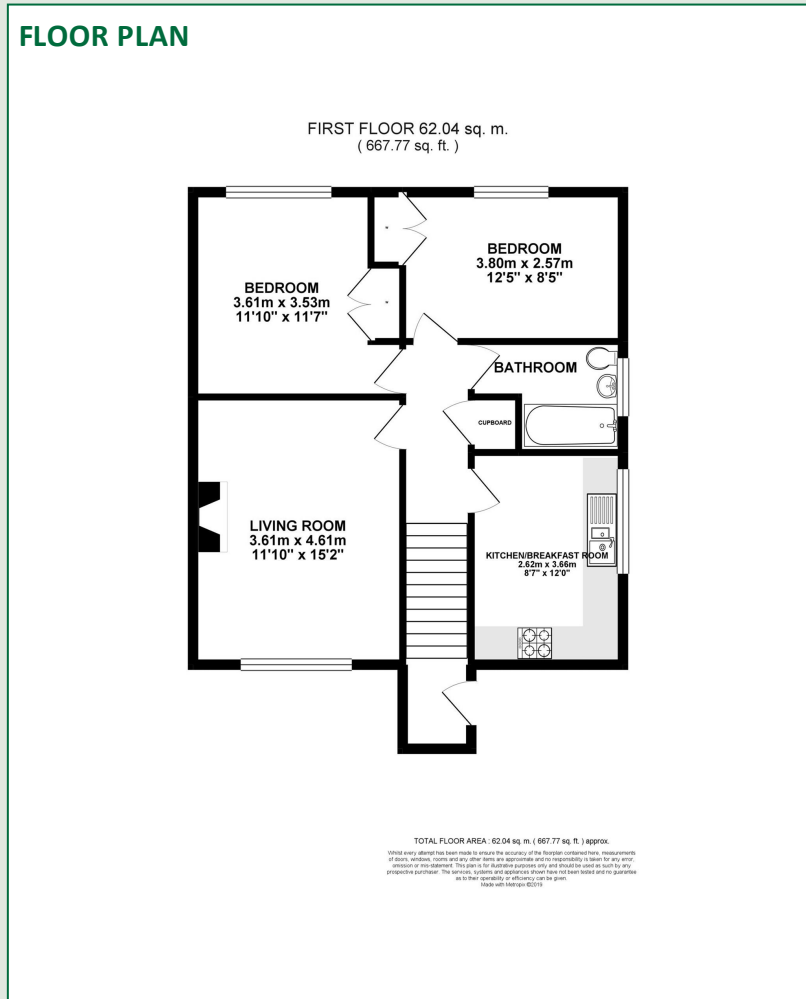


FOR SALE  
£195,000



**DESCRIPTION**

A smartly presented 2 double bedroom maisonette within walking distance from Newbury town centre and business park. This property has a large kitchen breakfast room, gas central heating and ample parking.



- Walking distance to Newbury Town Centre
- Two bedrooms.
- Kitchen
- Living room
- Bathroom
- Gas fired central heating
- Approx 937 years remaining on the lease
- Approx £15 a month maintenance charge
- Council tax band B
- garage in a block

**ENERGY EFFICIENCY RATING**

Energy Efficiency Rating		Current	Potential
Very energy efficient - lower running costs			
(92+)	<b>A</b>		
(81-91)	<b>B</b>		
(69-80)	<b>C</b>		<b>78</b>
(55-68)	<b>D</b>	<b>66</b>	
(39-54)	<b>E</b>		
(21-38)	<b>F</b>		
(1-20)	<b>G</b>		
Not energy efficient - higher running costs			
England, Scotland & Wales		EU Directive 2002/91/EC	

