

Walpole Road is a popular residential area located on the borders of Burnham. A development that is always in demand due to its excellent location. Burnham train station and M4 JCT 7 are both located only 0.3 miles away and makes commuting for work easier than ever before.

The apartment itself is a purpose built ONE bedroom apartment located on the top floor of this block. Consisting of ONE double bedroom, lounge, kitchen and modern bathroom. The is ample space throughout. The access into the communal area are via a securely locked front door.

This property is an ideal first time purchase. The current owner has kept the property in good condition and it is ready to the next owner to move straight in.



## Property Information

-  RESIDENTS PARKING
-  0.3 MILES TO BURNHAM STATION (ELIZABETH LINE)
-  GOOD CONDITION THROUGHOUT
-  ONE DOUBLE BEDROOM
-  CLOSE TO M4 JCT 7
-  PURPOSE BUILT

					
<b>x1</b>	<b>x1</b>	<b>x1</b>	<b>x1</b>	<b>N</b>	<b>N</b>
<b>Bedrooms</b>	<b>Reception Rooms</b>	<b>Bathrooms</b>	<b>Parking Spaces</b>	<b>Garden</b>	<b>Garage</b>

### Transport Links

Nearest stations:

- Burnham (0.3 miles)
- Taplow (1.2 miles)
- Slough (2.8 miles)

The M4 (jct 7) is approximately 2 miles distant, as is the M40 (jct 2) and these in turn provide access to the M25, M3 and Heathrow Airport. British Rail connections to Paddington are available from Burnham and Maidenhead. A direct train into London Waterloo is also available via Windsor & Eton Riverside station.

### Location

Burnham offers a good range of shops for day-to-day needs while further shopping facilities can be found in nearby Slough, Maidenhead, Windsor and Beaconsfield. An abundance of sporting facilities in the area including Cliveden Reach which is regarded as one of the most beautiful stretches of the River Thames for boating and fishing. In addition to Nashdom's own parkland there are many attractive walks in the grounds of Cliveden and at Burnham Beeches.

### Schools

PRIMARY SCHOOLS:

- Priory School  
0.3 miles away State school

- Our Lady Of Peace School  
0.3 miles away State school

- Cippenham School  
0.5 miles away State school

- Lent Rise School  
0.6 miles away State school

- Lynch Hill School  
1.0 miles away State school

- SECONDARY SCHOOLS:
- Burnham Grammar School  
0.6 miles away State school

- Haybrook College  
0.4 miles away State school

- Al-Madani Independent Grammar School  
0.1 miles away Independent school

- The Westgate School  
1.2 miles away State school

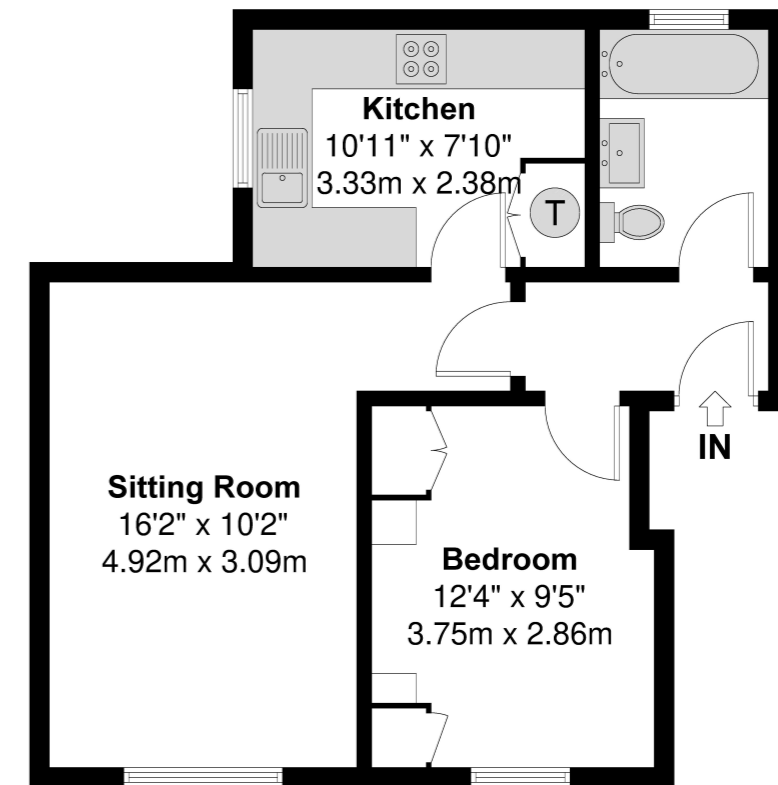
### Council Tax

Band B

## Floor Plan



**Walpole Road**  
Approximate Floor Area = 44.01 Square meters / 473.71 Square feet



### Second Floor

Illustration for identification purposes only, measurements are approximate, not to scale.

Prospective purchasers should be aware that these sales particulars are intended as a general guide only and room sizes should not be relied upon for carpets or furnishing. We have not carried out any form of survey nor have we tested any appliance or services, mechanical or electrical. All maps are supplied by Goview.co.uk from Ordnance Survey mapping. Care has been taken in the preparation of these sales particulars, which are thought to be materially correct, although their accuracy is not guaranteed and they do not form part of any contract.

