





Downmeadow, Heage, Belper, Derbyshire DE56 2UT
£160,000 - Freehold

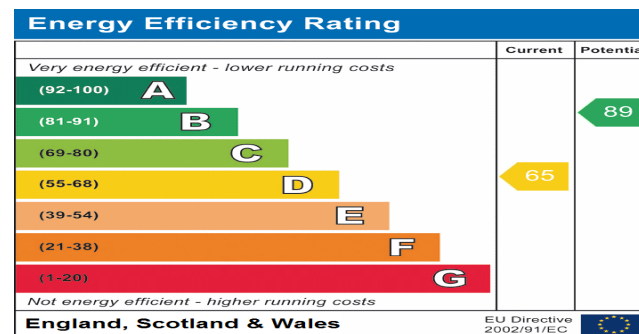


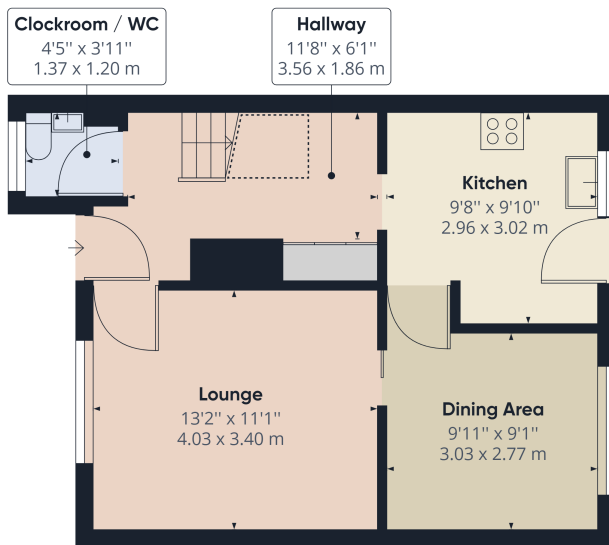
PROPERTY DESCRIPTION

Offered with no chain is this three bedroom modern mid townhouse offering spacious living accommodation located in a quiet residential position. The property benefits from gas central heating and double glazing with a sizable lounge and enclose private rear garden. The property will appeal to a first time buyers, buy to let investors and those looking to downsize. Located within 2 miles of Belper town centre and offering useful road links.

POINTS OF INTEREST

- Mid Town House
- 3 Bedroom, 1 Reception Room
- Front & Rear Gardens
- Communal Parking
- Cloakroom/Wc
- Upstairs Bathroom/Wc
- Fitted Kitchen
- No Chain
- Amber Valley Council Tax Band B





Ground Floor



Approximate total area⁽¹⁾
456.02 ft²
42.37 m²

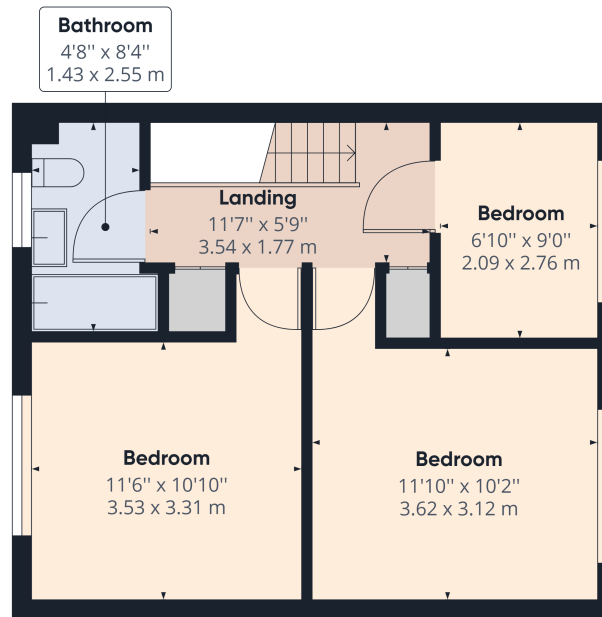
Reduced headroom
15.29 ft²
1.42 m²

(1) Excluding balconies and terraces

□ Reduced headroom
(below 1.5m/4'9")

While every attempt has been made to ensure accuracy, all measurements are approximate, not to scale. This floor plan is for illustrative purposes only.

GIRAFFE 360



Floor 1



Approximate total area⁽¹⁾
436.91 ft²
40.59 m²

(1) Excluding balconies and terraces

While every attempt has been made to ensure accuracy, all measurements are approximate, not to scale. This floor plan is for illustrative purposes only.

GIRAFFE 360