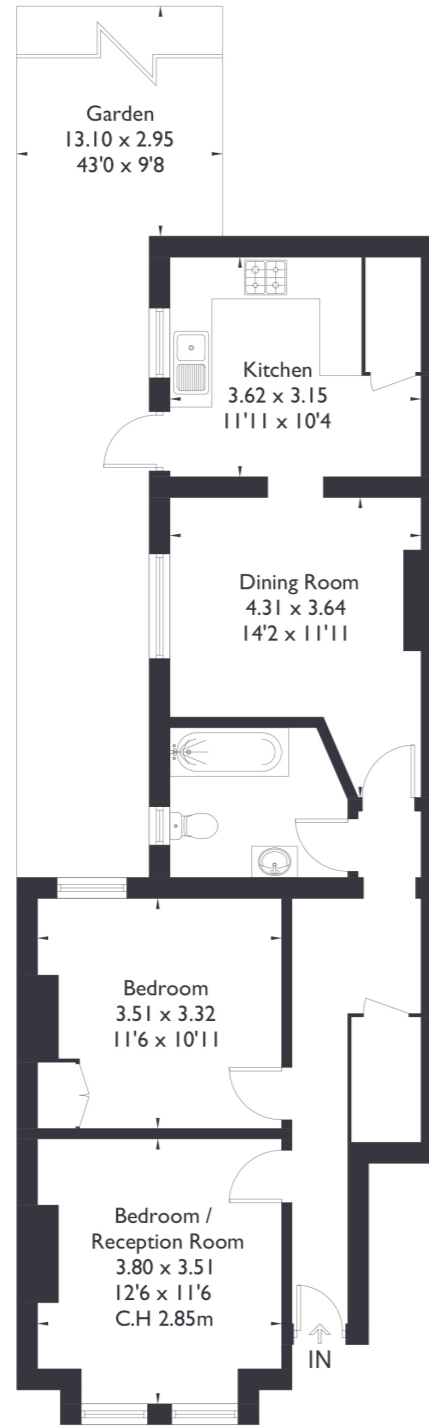


Lawrence Road, W5

Approximate Floor Area = 67.5 sq m / 726 sq ft



Ground Floor



2 BEDROOM FLAT

Lawrence Road, W5

£535,000

Welcome to this wonderful two bedroom, one bathroom ground floor flat. Positioned in a fantastic location, this property offers easy access to both Northfields Station and South Ealing Station, ensuring seamless commuting options. Additionally, residents can enjoy the nearby amenities of these vibrant areas.

FEATURES

- Leasehold
- Two Bedrooms
- One Bathroom
- Northfields and South Ealing Stations Nearby
- Private Garden
- Little Ealing Primary School
- EPC Rating D



2 BEDROOM FLAT

Lawrence Road, W5

Upon entry, you are greeted with two spacious double bedrooms to your left, boasting ample storage space to accommodate your needs.

Moving towards the rear of the property, you'll find a delightful dining and living area, perfect for entertaining or relaxing with loved ones. Beyond lies the separate kitchen, offering convenience and functionality. The kitchen also features a side entrance leading out to a private garden, providing a tranquil outdoor space for enjoying leisurely moments or al fresco dining.

Both Northfields Station and South Ealing Station are around a 10/15 min walk ensuring seamless commuting options. For those who prefer driving, the property benefits from proximity to the Great West Road, enabling quick access to central London within a mere 20 minutes. Families will appreciate the proximity to educational institutions such as the reputable Little Ealing Primary School and Gunnersbury Catholic School, ensuring quality education options for children and young adults. EPC Rating D.

