



Queen Street
Ulverston
Cumbria
LA12 7AF

Offers in Excess of £234,000

bettermove

Queen Street Ulverston

Bettermove are proud to present this 3 bedroom terraced house in Ulverston available with no forward chain.

The property benefits from double glazing, gas central heating throughout and has residents on street parking available.

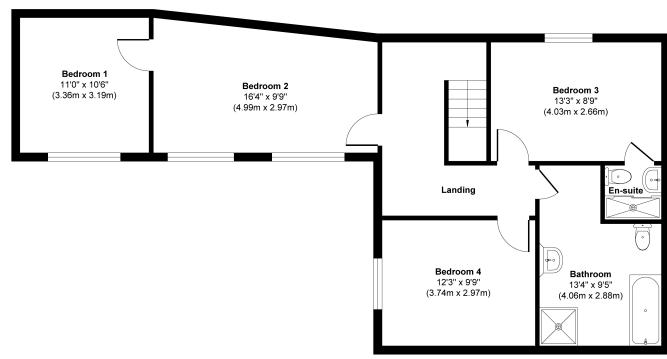
The council tax band is A.

The interior of this beautifully presented property comprises a spacious living room, dining room, utility room and fitted kitchen on the ground floor. The first floor consists of 3 bedrooms, an en-suite and the family bathroom. The exterior boasts a private rear yard, perfect for enjoying the summer months.

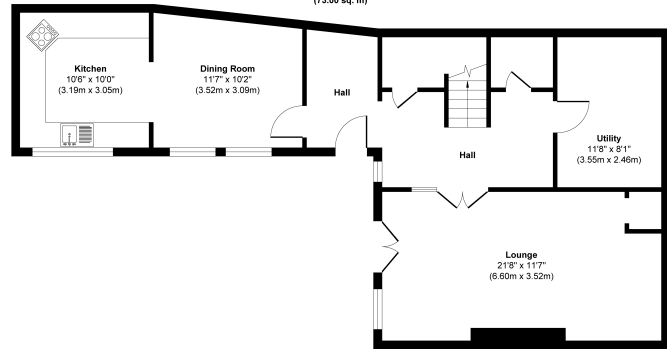
Located in the popular town of Ulverston, the property is close to a range of amenities, including shops, supermarkets, restaurants and pubs. Excellent transport connections can be found from the A590, Ulverston train station and local bus routes.

This exciting opportunity should not be missed! All enquiries can be made through Bettermove on 0330 004 0050.





First Floor
Approximate Floor Area
785 sq. ft
(73.00 sq. m)



Ground Floor
Approximate Floor Area
785 sq. ft
(73.00 sq. m)

Approx. Gross Internal Floor Area 1570 sq. ft / 146.00 sq. m

Whilst every attempt has been made to ensure the accuracy of the floor plan contained here, measurements of doors, windows, rooms and any other items are approximate and no responsibility is taken for any error, omission, or mis-statement. The measurements should not be relied upon for valuation, transaction and/or funding purposes. This plan is for illustrative purposes only and should be used as such by any prospective purchaser or tenant.

Energy Efficiency Rating		
	Current	Potential
Very energy efficient - lower running costs		
(92+) A		
(81-91) B		
(69-80) C		74
(55-68) D	61	
(39-54) E		
(21-38) F		
(1-20) G		
Not energy efficient - higher running costs		
England, Scotland & Wales	EU Directive 2002/91/EC	



20-22 Bridge End, Leeds, LS1 4DJ
t: 0330 004 0050 e: hello@bettermove.co.uk
www.bettermove.co.uk