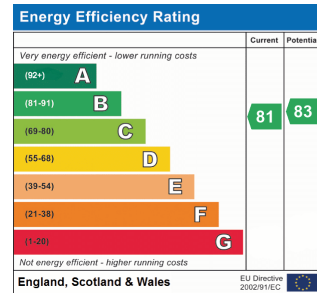
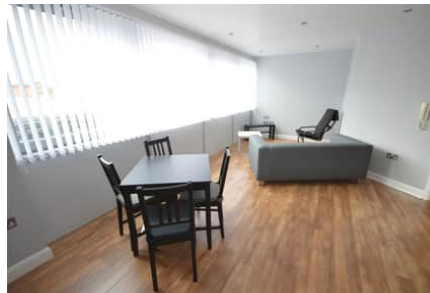




hackett
PROPERTY

66 Echo Building, City Centre Sunderland, SR1 1XD

- Luxurious two bedroom apartment



£800 pcm



1 Bathroom



2 Bedrooms

PROPERTY FEATURES

- City centre location
- Modern specification throughout
- Immaculate interiors, stylish furniture

12a Frederick Street,
Sunderland, SR1 1NA

01915109950

enquiries@hackettproperty.com

www.hackettproperty.com



AVAILABLE 30/08/2024

Immaculate two bedroom, fourth floor, city side, two washroom, furnished city centre apartment. Enjoying beautifully presented interiors and newly refurbished specification and furniture. Internally briefly comprising; lift access to fourth floor and hall to private access, reception hallway, open plan living room into fitted contemporary kitchen, two bedrooms one with shower room/WC and bathroom/WC. Modern features include integrated kitchen appliances, satellite television access, spot lighting, double glazing and electric heating. A beautifully presented apartment.

Damage deposit (5 weeks) £923.07

Council tax band D

Ground Floor

Communal Entrance

Accessed via entrance phone system and lift access to fourth floor leading to private entrance.

Reception Hallway

Providing access to main body of the accommodation with cloak storage cupboard, airing storage cupboard, timber effect laminate flooring, wall mounted heater and door.

Open Plan Living Room/Fitted Kitchen

30' 5" x 17' 5" (9.26m x 5.30m) (at widest) approximately,

Living area with stretch windows overlooking the predominately south facing front elevations therefore maximising degree of natural light and enjoying a considerable amount of the days sunshine, providing ample space for lounge and dining purposes. Features include timber effect laminate flooring, spot lighting, satellite television access point, telephone point, entrance phone, wall mounted heater and open to Kitchen area fitted with a contemporary range of white high gloss units to wall and base with chrome furniture and timber effect laminated work surface over incorporating a four ring brush chrome steel electric hob with oven under and brush steel filter hood over. The benefits include integrated fridge and separate freezer, washer, dryer, dishwasher, one and a half stainless steel drainage sink, under unit lighting, spot lighting, extractor to ceiling, continuation of laminate flooring and brush steel splash backs.

Bedroom 1

21' 7" x 11' 7" (6.59m x 3.52m) approximately, (at widest)

Superbly proportioned double bedroom with integrated wardrobes, television area point, wall mounted heater and door into

Shower Room/WC

Fitted with an oversized shower unit with chrome shower fitting, hand basin and toilet. Other benefits included ceramic floor tiling, wall tiling, wall mounted oversized dressing mirror, spot lighting, extractor, electrical shaving socket, and chrome heated towel rail.

Bedroom 2

14' 6" x 14' 2" (4.42m x 4.31m) approximately, (at widest)

Excellent double bedroom with wall mounted heater.

Bathroom/WC

Fitted with a white panel bath with bath/shower attachment, hand basin and toilet. Other benefits include ceramic floor and wall tiling, spot lighting, wall mounted oversized mirror, electrical shaving socket, extractor and chrome heated towel rail.