



Heathfield Gardens, London, W4 4JU

**Cow & Co**  
LONDON





A simply stunning three bedroom split level period home situated in a popular residential road in Chiswick. The property offers excellent contemporary style fixtures and fittings along with bright and spacious accommodation throughout. With stunning landscaped front and rear gardens and off road parking to the front this is certainly a property not to be missed. The property is very well located for Chiswick High Road's extensive facilities. Transport links include Chiswick Park and Gunnersbury Stations, local bus routes and easy access to the A4/M4 for routes in and out of London.



- Spread over two floors with lots of natural light and space
- Bright and spacious contemporary style kitchen open plan to a lovely living area
- Cosy lounge overlooking the gardens with ample space to entertain
- Lovely fixtures and fittings throughout
- Two remodelled bathrooms
- Parking space and gardens to the front
- Private landscaped rear garden to the rear
- Stunning three bedroom split level maisonette situated in an excellent location in Chiswick

# Heathfield Gardens, London, W4

Approximate Area = 1031 sq ft / 95.7 sq m

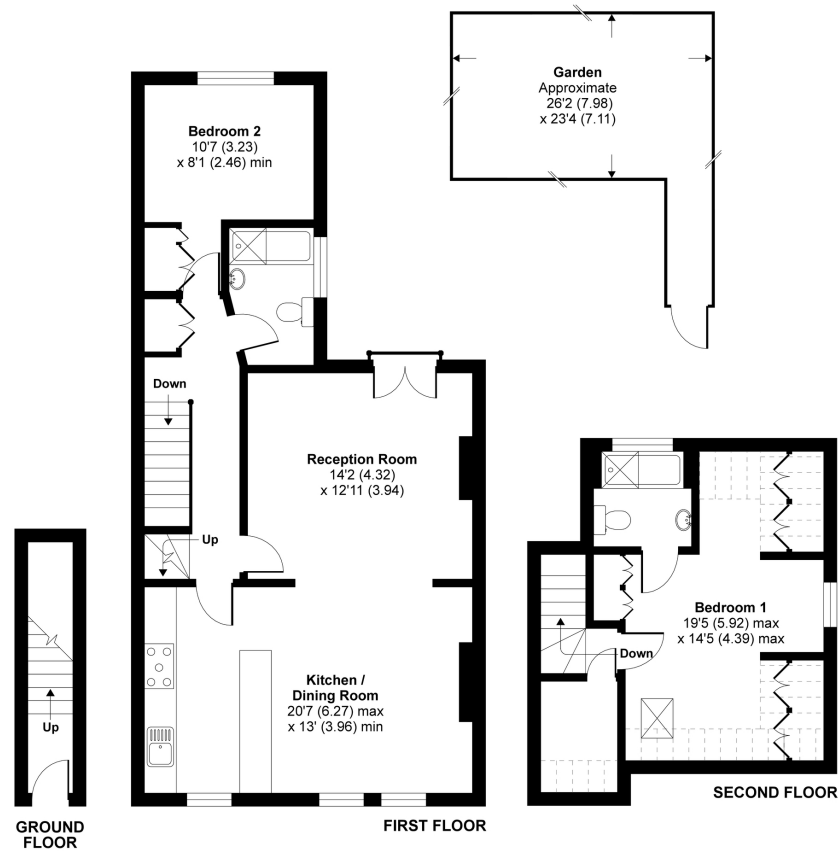
Limited Use Area(s) = 89 sq ft / 8.3 sq m

Total = 1120 sq ft / 104 sq m

For identification only - Not to scale



Denotes restricted head height



Floor plan produced in accordance with RICS Property Measurement Standards incorporating International Property Measurement Standards (IPMS2 Residential). © nichecom 2021. Produced for Cow & Co Properties Ltd. REF: 701757

Tel: 0208 065 0010  
Email: [thehub@cowandco-london.com](mailto:thehub@cowandco-london.com)  
Web: [cowandco-london.com](http://cowandco-london.com)

Agents note: All measurements are approximate and whilst every attempt has been made to ensure accuracy they are for general guidance only and must not be relied on. The fixture and fittings referred to have not been tested and therefore no guarantee can be given that they are in working order. Internal photographs are reproduced for general information and it must not be inferred that any item shown is included with the property.

# Cow & Co

LONDON