



Guide Price £489,995

Pum Erw Road, Heath, Cardiff, South

Glamorgan CF14 4PE

3 Bedroom 1 Bathroom 2 Receptions



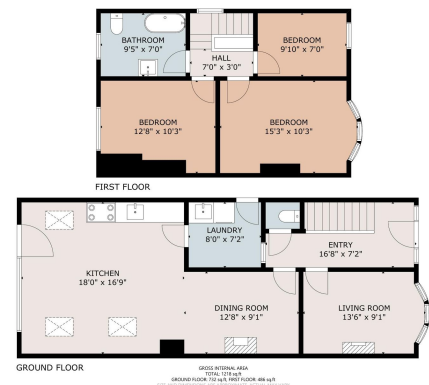
Property Descriptions

A recently extended and completely renovated red-brick bay-fronted semi-detached dwelling located on Pum Erw Road, which is a popular residential location off Heathway and within a short walk of local amenities as well as the UHW.

The accommodation briefly comprises storm porch, entrance hall, cloakroom/wc, living room, a fantastic open plan kitchen/diner/family room with a vaulted ceiling and bi-fold doors opening out to the rear patio and garden, utility room, three bedrooms and a family bathroom. The property further benefits from a recently installed gas central heating system, recently re-wired, off-road parking via newly laid drive and a low maintenance enclosed rear garden.

Situated in the sought-after Heath district of Cardiff, Pum Erw Road offers a prime residential setting known for its charming 1930s homes and large, south-facing gardens. The property benefits from exceptional local amenities, including the bustling Birchgrove area with its array of shops, cafes, and restaurants, as well as the expansive Heath Park, featuring tennis courts, a miniature steam railway, and open green spaces.

Proximity to the University Hospital of Wales and Cardiff University's Heath Park campus underscores the area's appeal, particularly for healthcare professionals and academics. Excellent transport links further enhance connectivity, with nearby Heath High and Low-Level



Info@chambersestateagents.co.uk

www.chambersestateagents.co.uk

35 Merthyr Road, Cardiff, CF14 1DB

0292 052 2106

Chambers

Estate Agents



Website

www.chambersestateagents.co.uk/



Email

info@chambersestateagents.co.uk



Phone

T: 0292 052 2106



Branch

35 Merthyr Road,
Cardiff CF14 1DB

Finding Homes Since 1992.