



19 Convery Close, Onchan, Isle of Man. IM3 1NT

Modern three bedroom home with South facing garden, utility room, allocated parking and master en-suite



£349,950 Freehold

PROPERTY DESCRIPTION

Manxmove Estate Agents are delighted to present this lovely terraced property, built in 2011, situated in the desirable area of Onchan. Perfectly designed for modern living, this contemporary home offers spacious and versatile accommodation in a peaceful setting.

Features include:

Three comfortable bedrooms – the main bedroom boasts an en suite shower room for added convenience.

Guest bathroom on the first floor.

Open plan lounge and dining area on the ground floor, seamlessly flowing onto the patio via patio doors—ideal for entertaining and relaxing.

Convenient downstairs toilet and a practical utility room.

South-facing garden split between a lawn and decking—perfect for outdoor gatherings and soaking up the sun.

This modern home combines comfort, style, and functionality. Whether you're a first-time buyer or looking to upgrade, 19 Convery Close offers a fantastic opportunity to enjoy a contemporary lifestyle in a sought-after location.

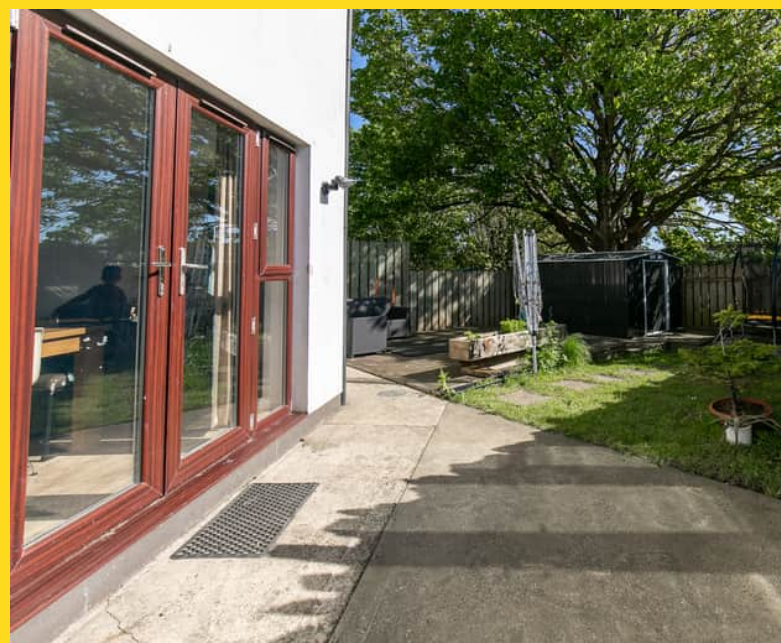
Don't miss out! Contact Manxmove today to arrange a viewing and make this beautiful house your new home

FEATURES

- Modern Terraced Home
- Popular Residential Location
- Close to Park, Beach, Schools and Shops
- Open Plan Lounge/Diner with Garden Access
- Modern Kitchen, Utility Room and W.C.
- 3 Bedrooms (1 En Suite) plus Bathroom
- South Facing Garden and Decking



Property Images

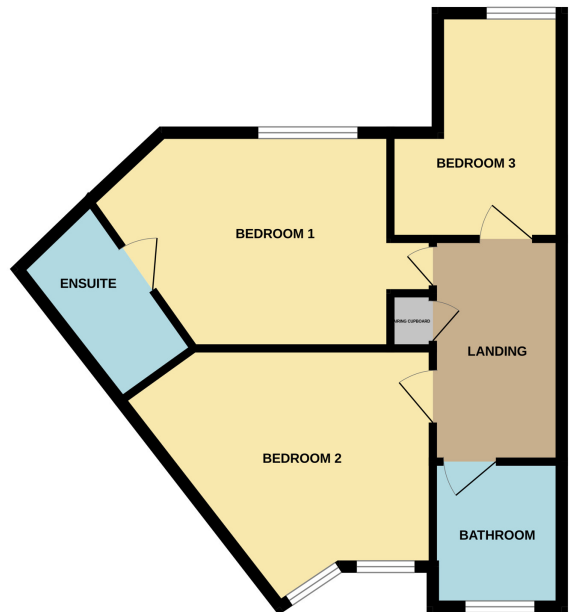


FLOORPLAN

GROUND FLOOR
516 sq.ft. (47.9 sq.m.) approx.



1ST FLOOR
486 sq.ft. (45.1 sq.m.) approx.



TOTAL FLOOR AREA : 1002 sq.ft. (93.1 sq.m.) approx.

Whilst every attempt has been made to ensure the accuracy of the floorplan contained here, measurements of doors, windows, rooms and any other items are approximate and no responsibility is taken for any error, omission or mis-statement. This plan is for illustrative purposes only and should be used as such by any prospective purchaser. The services, systems and appliances shown have not been tested and no guarantee as to their operability or efficiency can be given.
Made with Metropix ©2025

DISCLAIMER: Whilst Manxmove Ltd believe that these details are correct, neither Manxmove Ltd or their clients guarantee their accuracy in any way. Consequently, these details are not to be used to form part of any legally binding contract. Prospective purchasers or tenants are advised to visit this property to satisfy themselves as to the correctness of these details. Please note, we use wide angle camera lenses in order to show as much of each room as possible. This is not intended to mislead any prospective purchasers or tenants in any way and an honest verbal description is always available prior to viewing if required.