



Hatton Road  
Croydon  
Surrey  
CR0 3LX

Offers in Excess of £342,000

bettermove 

# Hatton Road

## Croydon

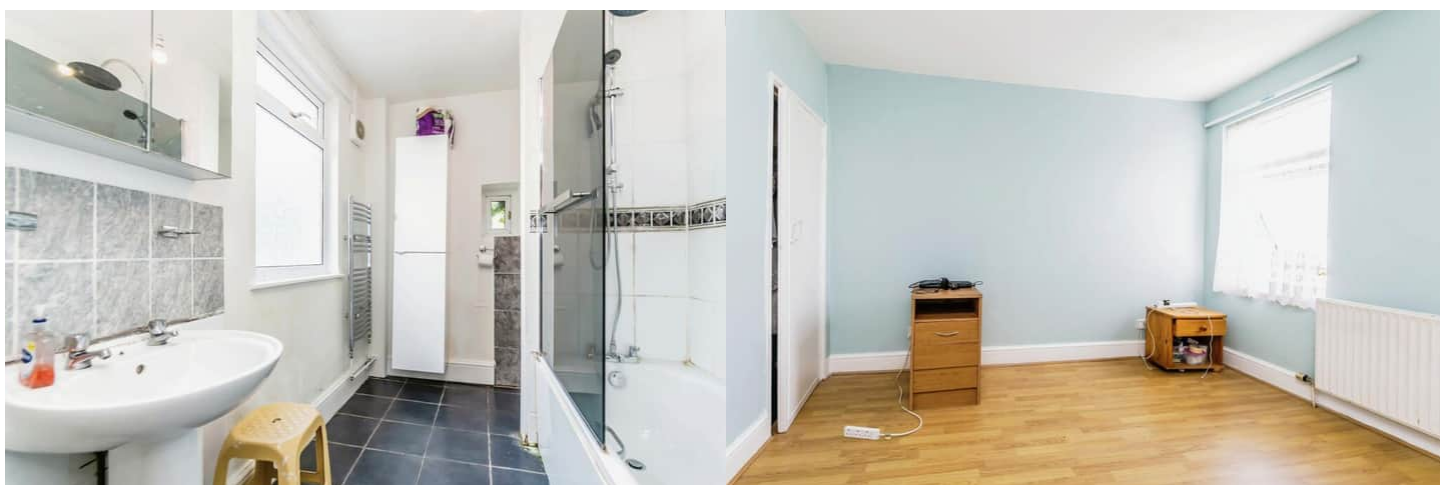
Bettermove are proud to present this 3 bedroom semi-detached house in Croydon.

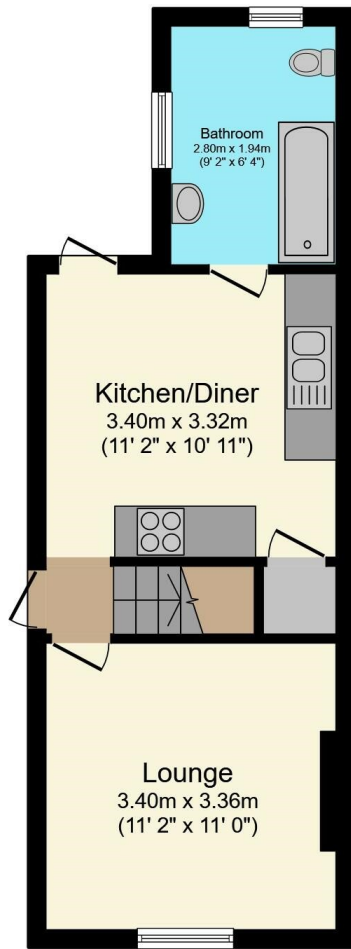
The property benefits from double glazing, gas central heating throughout. The council tax band is C.

The interior of this property comprises a spacious living room, family bathroom and fitted kitchen diner on the ground floor. The first floor consists of 3 bedrooms. The exterior boasts a private rear garden, perfect for enjoying the summer months.

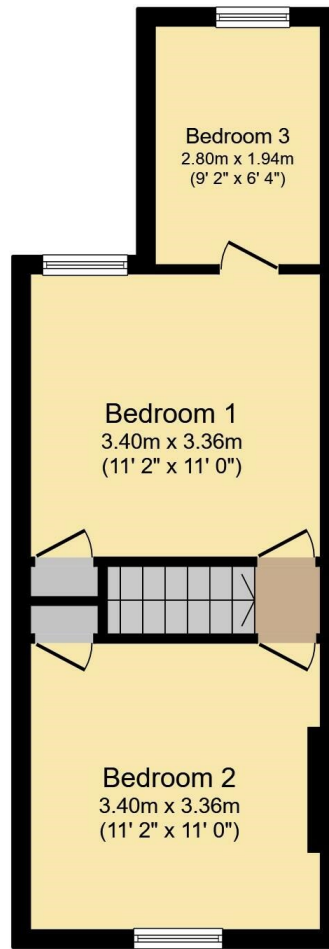
Located in the popular town of Croydon, the property is close to a range of amenities, including shops, supermarkets, restaurants and pubs. Excellent transport connections can be found from the A236, A213 and A23.

This exciting opportunity should not be missed! All enquiries can be made through Bettermove on 0330 004 0050.





**Ground Floor**



**First Floor**

Total floor area 63.5 m<sup>2</sup> (683 sq.ft.) approx

Energy Efficiency Rating		Current	Potential
<i>Very energy efficient - lower running costs</i>			
(92+)	<b>A</b>		
(81-91)	<b>B</b>		
(69-80)	<b>C</b>		<b>79</b>
(55-68)	<b>D</b>	<b>55</b>	
(39-54)	<b>E</b>		
(21-38)	<b>F</b>		
(1-20)	<b>G</b>		
<i>Not energy efficient - higher running costs</i>			
<b>England, Scotland &amp; Wales</b>		EU Directive 2002/91/EC	





20-22 Bridge End, Leeds, LS1 4DJ  
t: 0330 004 0050 e: hello@bettermove.co.uk  
[www.bettermove.co.uk](http://www.bettermove.co.uk)