



Estate Agents and Solicitors

48/10, Stewart Terrace, Gorgie, Edinburgh, EH11 1UJ

One Bedroom, Second-Floor Flat

Up to date price and viewing info at mov8realestate.com/property

espc rightmove  Zoopla
find your happy

Property Description

Beautifully-presented, one bedroom, second floor flat, forming part of a traditional stone-built tenement. Conveniently located in the popular Gorgie area, west of Edinburgh city centre.

Comprises an; entrance hallway, living/dining room, kitchen, double bedroom, shower room and a WC. Tastefully finished throughout, ready-to-move-in, a stylish kitchen with appliances, modern bathroom suite, recently fitted carpeted flooring and new gas boiler. In addition, there is double glazing, an exceptionally large shared garden, and unrestricted on-street parking.

The entrance hall affords access throughout and features carpeted flooring that carries through to the living room and bedroom. With a front aspect window, the bright and spacious lounge is afforded plenty of natural light, and offers stylish decor with a pendant light fitting, wall-mount TV point, and press cupboard. The contemporary kitchen is set internally to the rear and has fitted units with downlighting, stone effect worktops, tiled surround, and an inset sink. Appliances include an integrated oven and induction hob with extractor hood above and a freestanding fridge/freezer.

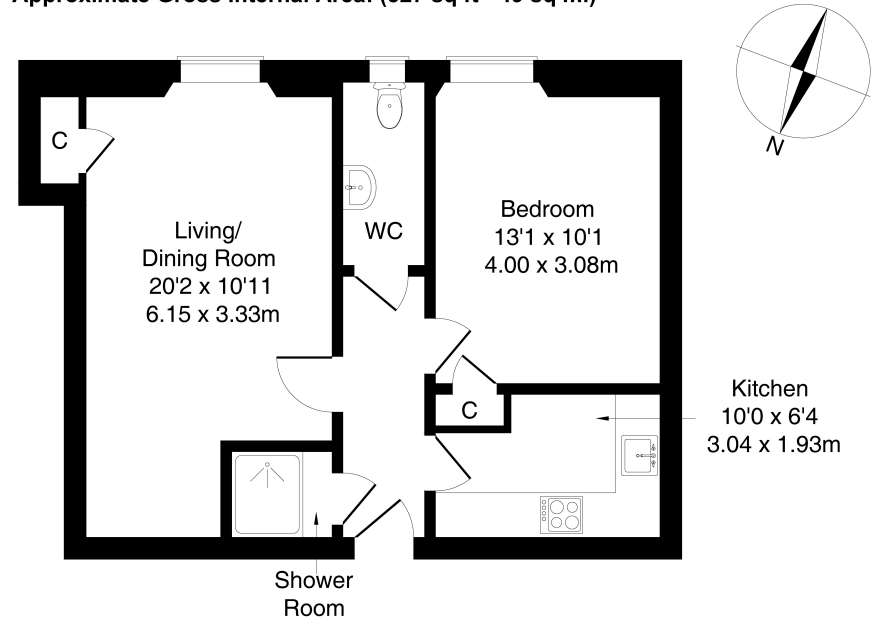
The well-proportioned bedroom benefits from a built-in cupboard and also offers ample space for freestanding furniture and natural light further accentuated by high ceilings. Completing the accommodation and set internally off the hall is the shower room with an integrated cubicle and tiled splash walls; whilst front-facing of the hall, is the WC, with a modern two-piece suite.

A 360 Virtual Tour is available online.

mov8 REAL ESTATE
Estate Agents and Solicitors

48/10 Stewart Terrace, Edinburgh, EH11 1UJ

Approximate Gross Internal Area: (527 sq ft - 49 sq m.)



Legal Disclaimer : Floor-plan and measurements are for illustrative guidance only, and not intended to form part of any contract.

Area Description

Gorgie is a popular and historic district of Edinburgh, just west of the city centre, comprising mostly of traditional stone-built tenements. Gorgie Road has a vibrant atmosphere, and provides extensive local amenities along its length, with a Sainsbury's and ALDi in Gorgie, and a 24-hour ASDA at Chesser providing superstore shopping. Home to Heart of Midlothian Football Club, there are a number of leisure opportunities including

Gorgie Farm, Dalry swimming pool, Craiglockhart Sports Centre, and Fountain Park with a multi-screen cinema, fitness centre and numerous restaurants. Frequent bus services are available from Gorgie Road, whilst Haymarket Station, Napier and Heriot-Watt universities and Edinburgh College are also within easy reach.





Our Services

- Free pre-sale property valuations
- Great value fixed estate agency fees
- Extensive buyer matching database
- Purchase and sale conveyancing

Contact Us

0345 646 0208

sales@mov8realestate.com

www.mov8.com

Head Office

6 Redheughs Rigg, Edinburgh, EH12 9DQ

Glasgow Office

77 Renfrew Street, Glasgow, G2 3BZ



Estate Agents and Solicitors

