

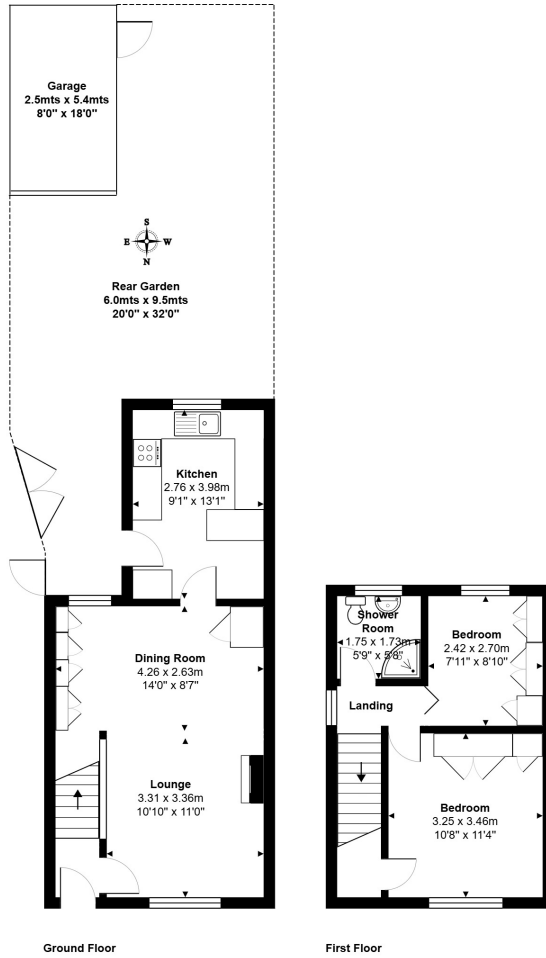


The Glade, Staines-upon-Thames, Surrey, TW18 1ES

SPACIOUS & EXTENDED TWO BEDROOM SEMI-DETACHED PROPERTY SITUATED ALONG THIS MUCH SOUGHT AFTER NO-THROUGH ROAD CONVENIENTLY POSITIONED FOR EASY ACCESS TO STAINES TOWN CENTRE & MAINLINE TRAIN STATION. The property benefits from a spacious lounge/diner, fitted kitchen/breakfast room, two double bedrooms, shower room, large secluded rear garden, off-street parking and garage. No Onward Chain. Viewings Highly Recommended!

ROOM DESCRIPTIONS

FLOORPLAN



Ground Floor

First Floor

Total Area: 66.0 m² ... 710 ft²

All measurements are approximate and for display purposes only.