



Leader Avenue, MANOR PARK

Guide Price £200,000 - £225,000. For sale is this two-bedroom flat in need of modernisation. The property boasts a single reception room, a fitted kitchen and a bathroom - an ideal project for those who enjoy personalising their space. The flat offers the added benefit of no onward chain. One of its standout features is a court yard garden. Despite the need for some updates, the property holds a lot of potential and is waiting for someone to turn it into a dream home. Don't miss this unique opportunity. The current lease is 125 years from 25th March 2015, ground rent £350 per annum, no service charge and building insurance £207.07 per annum.

Guide Price £200,000

- NO ONWARD CHAIN
- GROUND FLOOR FLAT
- TWO BEDROOMS
- COUNCIL TAX - BAND B
- LEASEHOLD
- EPC - D

GROUND FLOOR

ENTRANCE

Via communal door to communal hall, own front door to hallway.

BEDROOM ONE

Double glazed window, radiator.



BEDROOM TWO

Double glazed window to front, radiator.



OPEN PLAN LOUNGE/KITCHEN

Double glazed window to rear, range of eye and base units, integrated oven, gas hob, stainless steel sink with single drainer and mixer tap, plumbing for washing machine, tiled splashback, wall mounted boiler, double glazed door to garden.



BATHROOM/WC

Double glazed window to rear, radiator, panelled bath with mixer tap and shower screen, WC, wash basin, extractor fan.

EXTERIOR

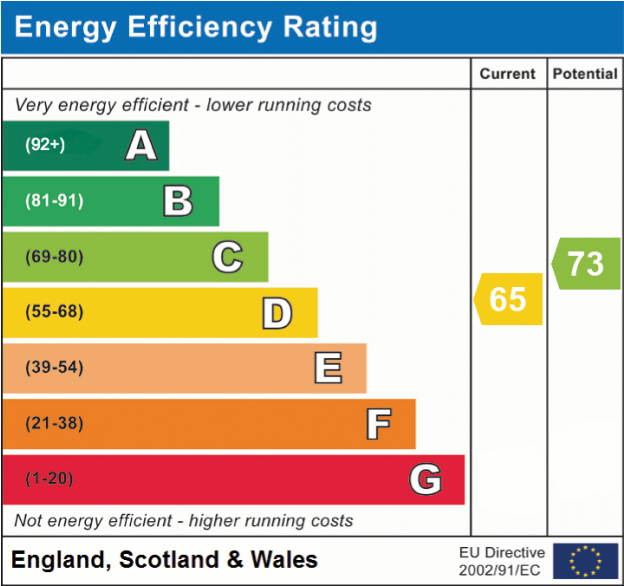
REAR GARDEN



Steps down to paved patio area.

AGENTS NOTE

As part of the service we offer, we may recommend ancillary services to you which we believe may help you with your property transaction. We wish to make you aware, that should you decide to use these services, we will receive a referral fee. For full and detailed information please visit 'terms and conditions' on our website.



What's Next?

If you would like to view or make an offer please contact Payne & Co on 020 8518 3000

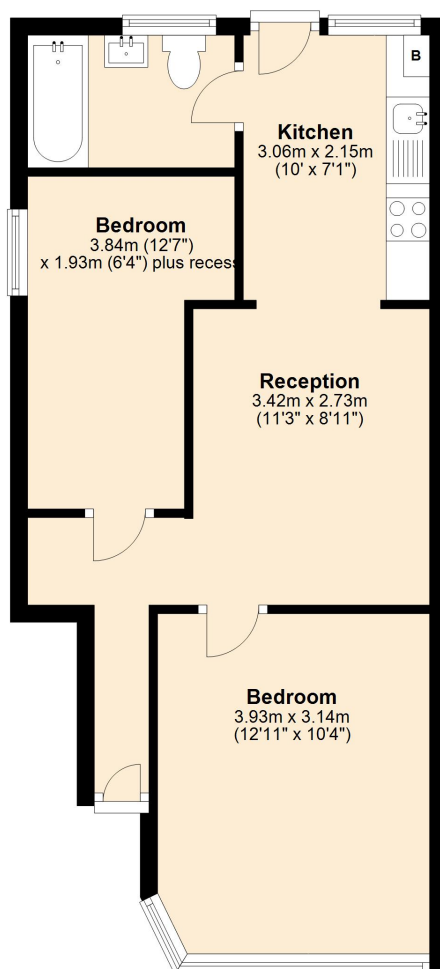
Disclaimer

Consumer Protection from Unfair Trading Regulations 2008 and the Business Protection from Misleading Marketing Regulations 2008:

Every effort has been made to ensure that consumers and or businesses are treated fairly and provided with accurate material information as required by law. It must be noted however that the agent has not tested any apparatus, equipment, fixture, fittings or services and does not verify they are in working order, fit for their purpose, or within the ownership of the seller or landlord, therefore the buyer or tenant must assume the information given is incorrect. Neither has the agent checked the legal documentation to verify the legal status of the property. A buyer or tenant must assume information is incorrect until it has been verified by their own solicitors or other advisers. Nothing concerning the type of construction, condition of the structure or its surroundings is to be implied from any image of the property.

Ground Floor

Approx. 44.9 sq. metres (483.0 sq. feet)



Total area: approx. 44.9 sq. metres (483.0 sq. feet)