



2a Upton End Road, Shillington, Hitchin, Bedfordshire. SG5 3PG





4 Bedroom Detached House

Guide Price £580,000

Nestled in a peaceful location, this extremely well presented four-bedroom, two reception room, two bathroom property boasts an impressive layout with a large front and rear garden, perfect for family living. With ample off-road parking which can accommodate several vehicles, this home is truly versatile.

- Four Bedroom detached family home
- Quiet cul-de-sac location
- Two reception rooms
- Fitted kitchen and utility room
- Potential to extend or convert garage (STPP)
- Two bathrooms
- Extensive front and rear garden
- Sought after village location
- Easy access of Hitchin
- EPC rating D. Council tax band E

Ground Floor

Porch:

Enter via double glazed door with windows to front and side.

Inner Hallway:

With an abundance of light via double glazed windows to front and side. Understairs storage cupboard. Radiator. Stairs to first floor.

Cloakroom:

Two piece suite comprising low flush wc and pedestal wash hand basin. Radiator.

Lounge:

Abt. 14' 8" x 12' 9" (4.47m x 3.89m) Double glazed french doors to rear and further double glazed window. Feature fireplace with log burner. Radiator.

Dining Room:

Abt. 9' 8" x 9' 3" (2.95m x 2.82m) Double glazed triple length window to front. Radiator.

Kitchen:

Abt. 11' 1" x 9' 3" (3.38m x 2.82m) Double glazed window to rear overlooking the garden. Range of wall and base units with work surfaces. Inset butler sink with mixer taps. Space for double cooker and extractor fan. Space for fridge/freezer and dishwasher. Radiator. Door to utility room.

Utility Room:

Double glazed door to garden. Range of wall and base units with sink unit. Plumbing for washing machine. Radiator.

First Floor

Landing:

Doors to bedrooms, bathroom and airing cupboard. Access to loft.

Principal Bedroom:

Abt. 13' 6" x 10' 8" (4.11m x 3.25m) Double glazed window to front. Fitted wardrobe. Radiator. Door to en-suite.

En-Suite:

Double glazed window. Three piece suite comprising walk in shower cubicle with mixer taps, low flush wc and wash hand basin with mixer taps. Radiator.

Bedroom Two:

Abt. 11' 5" x 8' 0" (3.48m x 2.44m) Double glazed window to front. Radiator.

Bedroom Three:

Abt. 11' 0" x 9' 1" (3.35m x 2.77m) Double glazed window to rear. Radiator.

Bedroom Four:

Abt. 12' 0" x 7' 7" (3.66m x 2.31m) Double glazed window to rear. Radiator.

Family Bathroom:

Double glazed window to rear. Three piece suite comprising a 'P' shaped bath with shower over and curved side screen, wash hand basin with mixer taps and low level wc. Tiled walls and flooring.

Outside**Front Garden:**

Block paved driveway for up to 3 cars. Extensive lawn area and mature tree. Side pedestrian access.

Rear Garden:

Enclosed garden with spacious paved terrace with steps to lawn surrounded by mature shrubs and evergreens. Shed. Side pedestrian access.

Garage:

Up and over door. Power and light.

Agents Note:

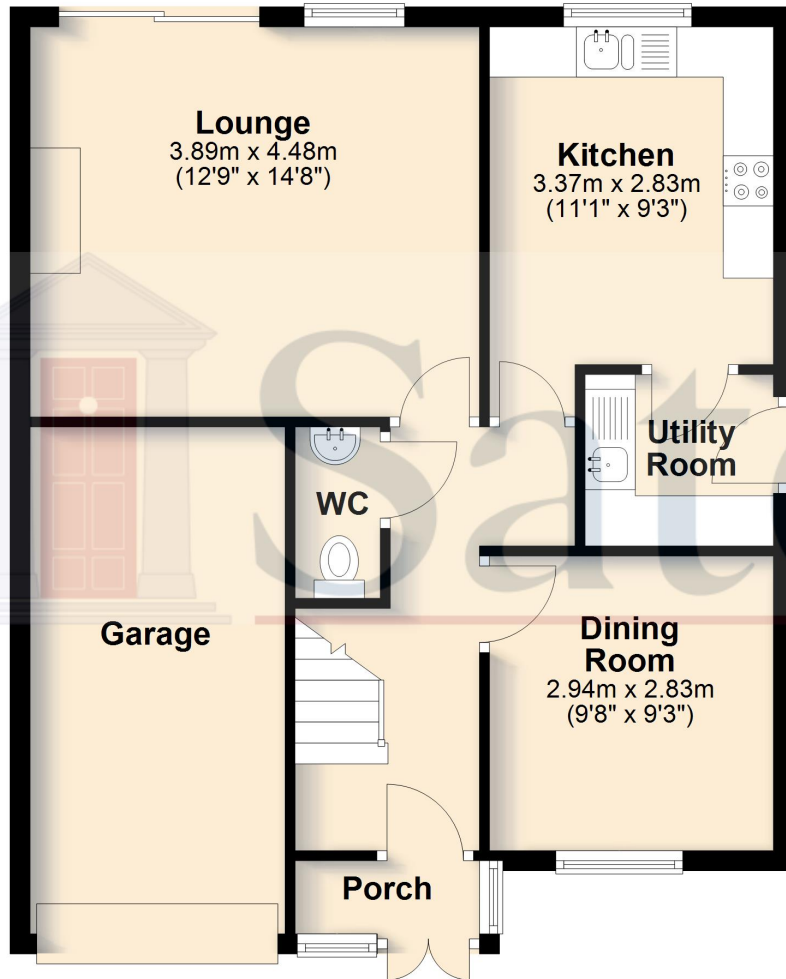
Draft particulars yet to be approved by the vendor and may be subject to change.



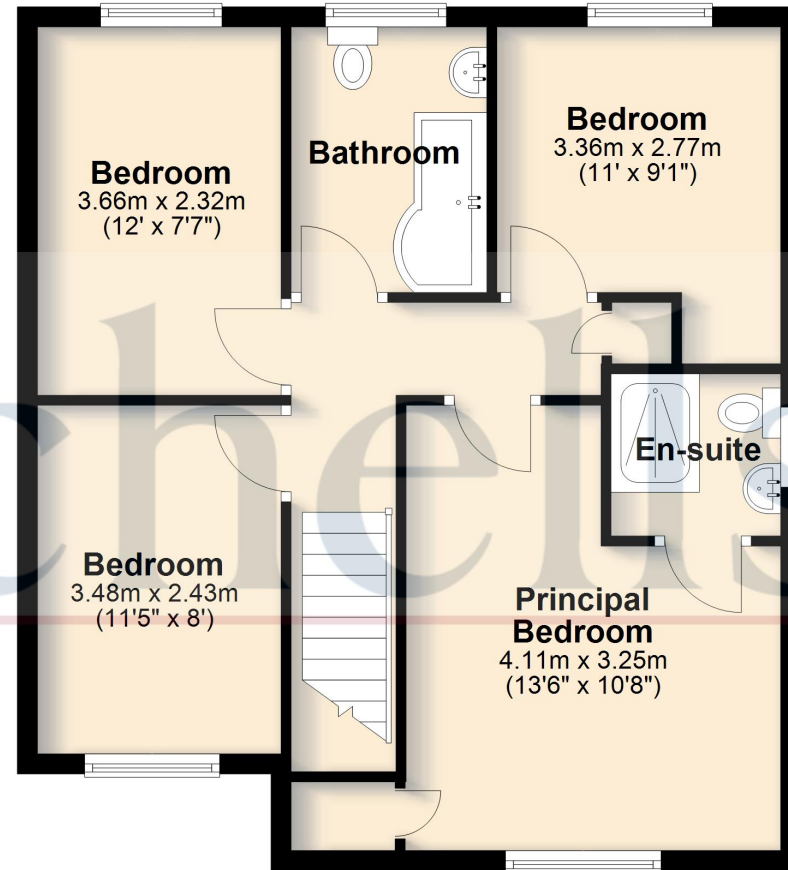


These particulars are a guide only and do not constitute an offer or a contract. The floor plan is for identification purposes only and not to scale. All measurements are approximate and should not be relied upon if ordering furniture, white goods and flooring etc. We have presented the property as we feel fairly describes it but before arranging a viewing or deciding to buy, should there be anything specific you would like to know about the property please enquire. Satchells have not tested any of the appliances or carried out any form of survey and advise you to carry out your own investigations on the state, condition, structure, services, title, tenure, and council tax band of the property. Some images may have been enhanced and the contents shown may not be included in the sale. Satchells routinely refer to 3rd party services for which we receive an income from their fee. If you would like us to refer you to one of these services please ask one of our staff who will pass your details on. We advise you check the availability of the property on the day of your viewing.

Ground Floor



First Floor



For illustrative purposes only - NOT TO SCALE - Measurements shown are approximate. The size and position of doors, windows, appliances and other features are approximate.
Plan produced using PlanUp.