



**34 Talland Avenue, Fishermead, Milton  
Keynes, Buckinghamshire, MK6 2EN**

**£305,000 Freehold**

- Three bedroom
- Central location of Fishermead
- Single garage
- Off road parking
- Ideal first time purchase
- Within walking distance of CMK City Centre
- Downstairs cloakroom
- Many local amenities and restaurants nearby
- EPC-C
- EPC Rating





**\*\*\* IDEAL INVESTMENT \*\*\*** This is a three bedroom semi detached house located in the central area of Fishermead. The accommodation comprises entrance hall, kitchen, lounge/diner, downstairs cloakroom, three good size bedrooms and family bathroom. Outside there is a rear and front garden, single garage and off road parking for two vehicles. This property benefits from being within walking distance to CMK City Centre and would make an ideal first time purchase or buy to let investment. Please call the elevation team today to arrange your viewing

## GROUND FLOOR

### Entrance Hall

Doors leading to:

### Downstairs Cloakroom

Fitted to comprise two piece suite

### Lounge Diner

### Kitchen

## FIRST FLOOR

### Landing

Doors leading to:

### Bedroom One

5.35m x 2.90m (17' 7" x 9' 6")

### Bedroom Two

### Bedroom Three

2.22m x 1.90m (7' 3" x 6' 3")

### Family Bathroom

Fitted to comprise three piece suite

## EXTERIOR

### Rear and Front Garden

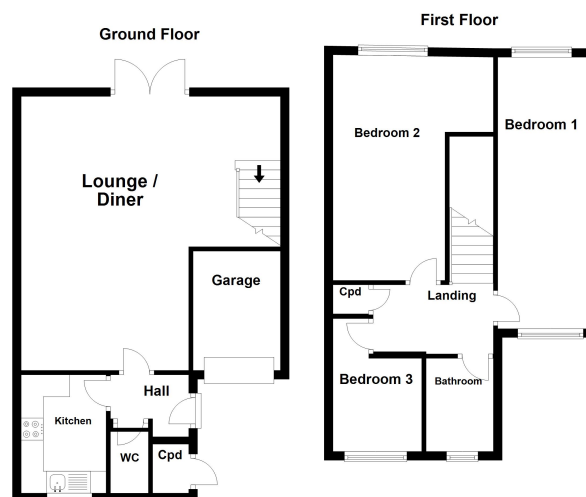
### Single Garage

### Off Road Parking

Space for two vehicles

## Disclaimer

Whilst we have endeavoured to prepare our sales particulars accurately none of the services, appliances or equipment have been tested. A buyer should satisfy themselves on such matters prior to purchase. Any measurements or distances mentioned in these particulars are for guide reference only. If such particulars are fundamental to a purchase, buyers should rely on their own enquiries. All enquiries should be directed to Elevation Estate Agents in the first instance.



elevation estate agents  
Plan produced using PlanUp.