



Checkley Grove,
Adderley Green



OneAgency

01782 970222

hello@oneagencygroup.co.uk



Offers in the Region of £145,000

Semi detached house situated in the popular location of Adderley Green, close to Park Hall County Park and convenient for access into Longton town centre and the A50. The property is considered an ideal first time buy and benefits from garage with parking space and generous rear garden. Viewing is highly recommended.





GROUND FLOOR

Living Room

3.28m max x 6.02m (10' 9" x 19' 9") Door to side, double glazed window to front, stairs to first floor, door into kitchen, two radiators, fire surround with marble effect inset and hearth.

Kitchen

2.31m max x 3.18m max (7' 7" x 10' 5") Fitted range of wall, base and drawer storage units, sink and drainer unit with mixer tap, radiator, fitted gas hob with extractor fan above, plumbing for washing machine, plumbing for dishwasher, fitted oven, wall mounted Baxi Boiler, part tiled walls, tiled floor.

Bathroom

2.03m x 1.50m (6' 8" x 4' 11") Double glazed frosted window to side, panelled bath with electric shower over, hand wash basin, heated towel rail, tiled walls.

WC

1.51m x 0.88m (4' 11" x 2' 11") WC, double glazed frosted window to side.

Outside

Rear garden with lawn and patio area.

Brick Built Garage

5.09m max x 2.53m (16' 8" x 8' 4")

Agents Notes

Council Tax Band B

Stoke on Trent Local Council



FIRST FLOOR

Landing

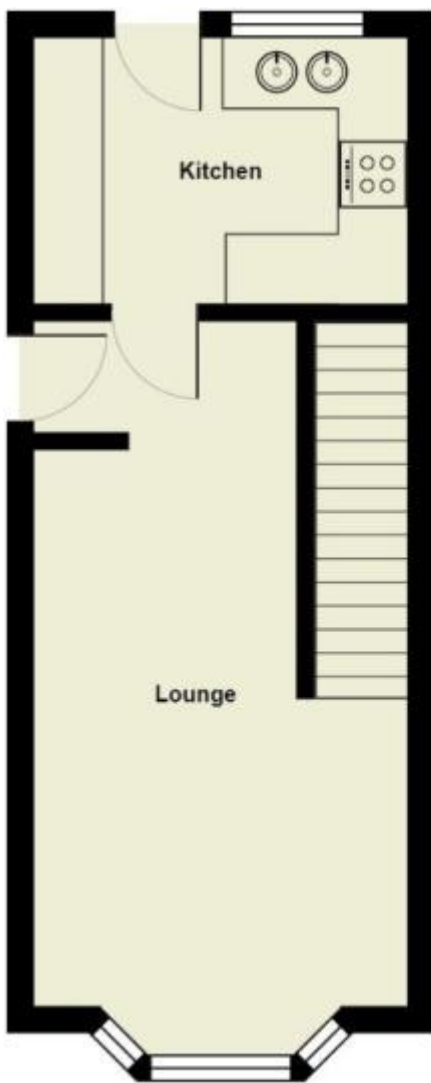
Access to loft.

Bedroom One

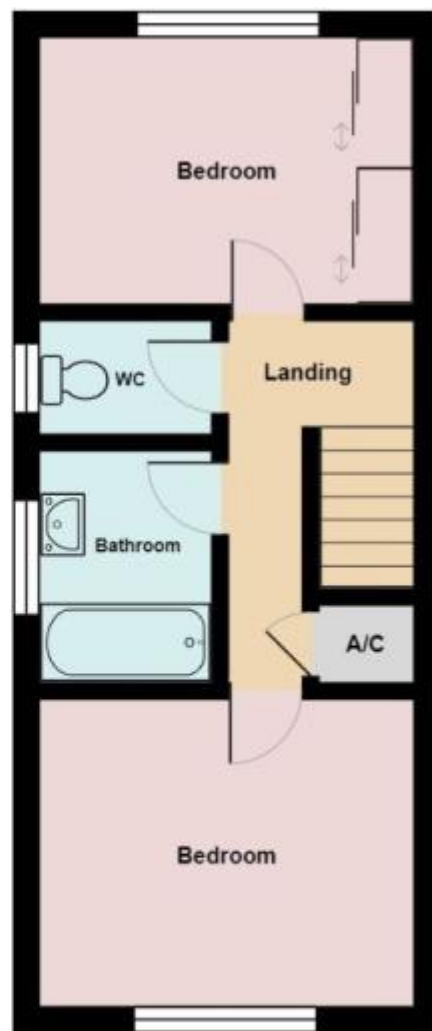
3.28m x 2.93m (10' 9" x 9' 7") Double glazed window to front, radiator.

Bedroom Two

2.33m x 2.50m (7' 8" x 8' 2") Double glazed window to rear, radiator, fitted wardrobes.



Ground Floor



First Floor

All measurements are approximate and for display purposes only



OneAgency, 9 & 10 Ridge House Drive, Festival Park, Stoke-on-Trent, ST1 5SJ

01782 970222

hello@oneagencygroup.co.uk

Every attempt has been made to ensure accuracy, however, all measurements are approximate and for illustrative purposes only. **Not to scale.**

In accordance with The Consumer Protection from Unfair Trading Regulations 2008 the following particulars have been prepared in good faith and they are not intended to constitute part of an offer or contract. We have not carried out a structural survey and the services, appliances and specific fittings have not been tested. All photographs, measurements, floor plans and distances referred to are given as a guide only and should not be relied upon for the purchase of carpets or any other fixtures and fittings. Lease details, service charges and ground rent (where applicable) are given as a guide only and should be checked and confirmed by your Solicitor prior to exchange of contracts.